

City Council Election Districts Map Alternatives

May 23, 2024 •

City of Riviera Beach, Florida

Agenda

- The Redistricting Team
- The City Charter
- The Process
- Data
- District Population Analysis
- Alternative Districts

Redistricting Team

- Ronald R. Schultz, Ph.D.
 - Professor Emeritus, FAU Department of Geosciences
- James Gammack-Clark, M.A., Ph.D. candidate (ABD)
 - University Instructor, FAU Department of Geosciences
- Michael Stamm, Jr., MURP
 - Adjunct Faculty, FAU Department of Urban and Regional Planning

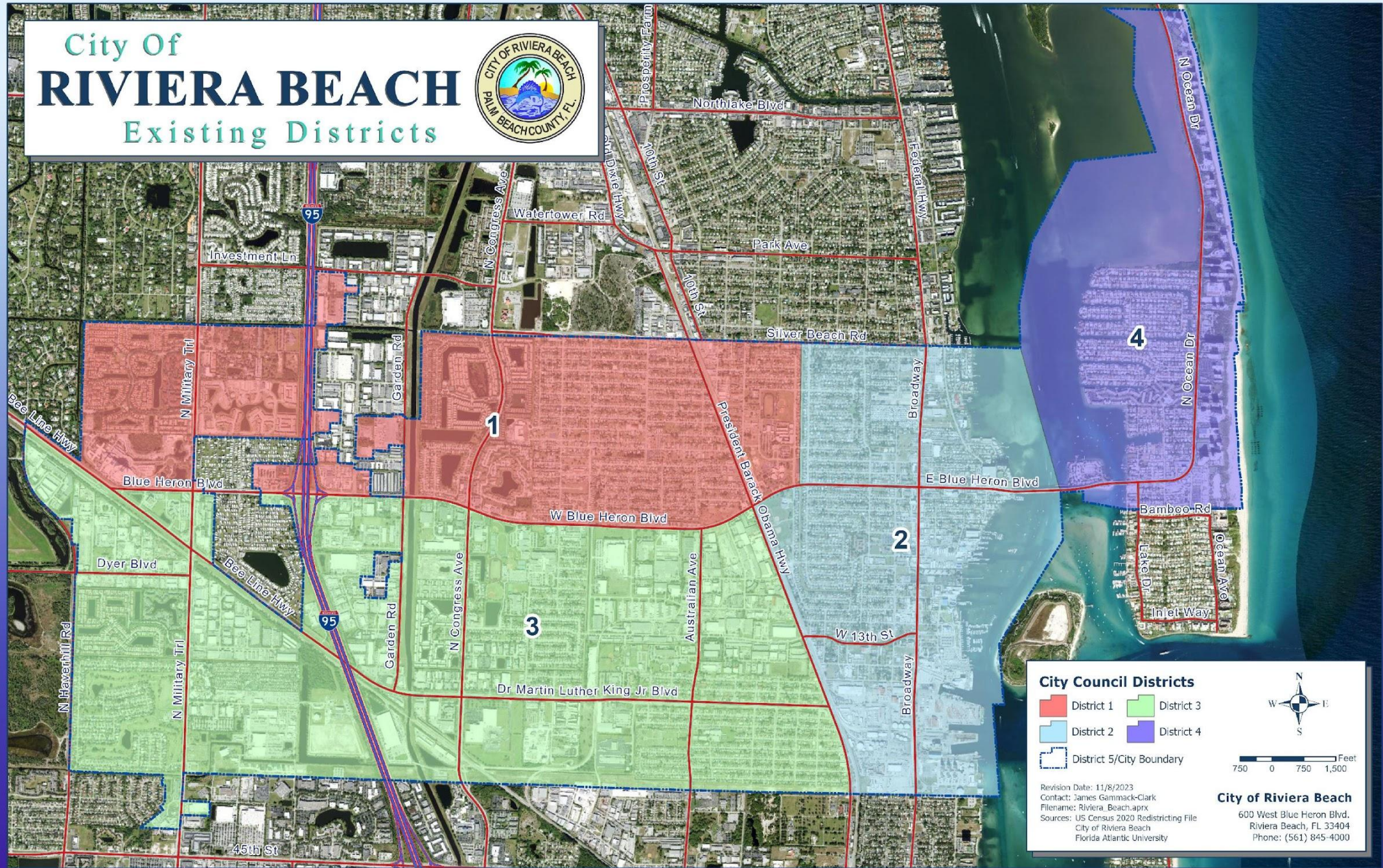
The City Charter

The City of Riviera Beach shall be divided into four voting districts, however, the election shall be city-wide. The mayor and the candidates in group 5 shall be elected at large and without regard to districts.

*The city council shall by ordinance set the boundaries of districts 1, 2, 3, and 4 by January 1, 1975 and either confirm, modify or change the district by January 1, 1985 and every ten years thereafter. Each district shall be as nearly as practicable equal in population and the districts **must not vary more than eight percent** in population at the time of creating said districts or the adjustment thereof every ten years. Appropriate city staff, as designated by the city manager, shall review the district boundaries and recommend any necessary revisions to the city council.*

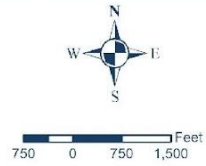
City Of RIVIERA BEACH

Existing Districts



City Council Districts

- District 1
- District 2
- District 3
- District 4
- District 5/City Boundary



Revision Date: 11/8/2023
 Contact: James Gammack-Clark
 Filename: Riviera_Beach.aprx
 Sources: US Census 2020 Redistricting File
 City of Riviera Beach
 Florida Atlantic University

City of Riviera Beach
 600 West Blue Heron Blvd.
 Riviera Beach, FL 33404
 Phone: (561) 845-4000

The Process

- Part 1
 - Current District Analysis – Report submitted to the City
 - Population Estimates – COs through March 2024
 - Present Initial Findings to City Council and Public – April 11, 2024
- Part 2
 - Creation of Redistricting Map Alternatives
 - Presentation of Alternatives to City Council and Public
 - Map Selection and Adoption by Ordinance

Data

- U.S. Census Bureau's 2020 Census Redistricting Summary Files [Public Law 94-171]:
 - Resident population counts by census block
 - The smallest enumeration unit possible
 - Aggregated to form each of the four voting districts
- Housing Data provided by The City of Riviera Beach
 - From which Population Estimates were derived to account for new housing, completed since April 1, 2020 (Census Day) through March of 2024

Existing Districts – Population Added to City Since the 2020 Census

2,261 people are estimated to have been added to the City through March 2024

The majority of which (1,465) are in District 1

Development	Units	Population Estimate	Current District	Completion Date
Amrit Resort Condo	96	265	4	2024
Arbor Parc (Phase II & III)	500	1380	1	2022
Fontaine Duplexes	12	33	1	2023
Heron Estates	79	218	3	2022
Riviera Cove	89	246	2	2022
District 1 SF Homes	19	52	1	2023
District 2 SF Homes	5	14	2	2023
District 3 SF Homes	9	25	3	2022
District 4 SF Homes	8	22	4	2023
Estimated by Development	817	2,255		
Estimated by Census Block	817	2,261		

2020 Enumeration and 2024 Population Estimate

- 2024 population estimate :
 - The population of the City of Riviera Beach is estimated to be 39,865
 - Average population for each district: 9,966

Current Districts	2020 Population	% of City	Deviation From Average	2024 Population Projection	% of City	Deviation From Average
District 1	15,793	42.0	68.0%	17,261	43.3	73.2%
District 2	6,968	18.5	-25.9%	7,229	18.1	-27.5%
District 3	10,552	28.1	12.2%	10,796	27.1	8.3%
District 4	4,291	11.4	-54.4%	4,579	11.5	-54.1%
Total	37,604	100	160.5%	39,865	100	163.0%
Average	9,401	25	40.1%	9,966	25	40.8%

District Analysis (2024)

- Largest: District 1 at 17,261 people
 - 7,295 (73.2%) more people than the mathematical average
- Smallest: District 4 at 4,579 people
 - 5,387 (54.1%) fewer people than the mathematical average

Current Districts	2020 Population	% of City	Deviation From Average	2024 Population Projection	% of City	Deviation From Average
District 1	15,793	42.0	68.0%	17,261	43.3	73.2%
District 2	6,968	18.5	-25.9%	7,229	18.1	-27.5%
District 3	10,552	28.1	12.2%	10,796	27.1	8.3%
District 4	4,291	11.4	-54.4%	4,579	11.5	-54.1%
Total	37,604	100	160.5%	39,865	100	163.0%
Average	9,401	25	40.1%	9,966	25	40.8%

District Analysis (2024)

- Population imbalance becomes even more extreme
 - Total Deviation of 163.0%, with a mean of **40.8%**, between all four districts
 - Spread = **127.3%** (73.2 + 54.1% between highest & lowest districts)
 - Exceeding max. 8% overall deviation from the ideal size across districts

Current Districts	2020 Population	% of City	Deviation From Average	2024 Population Projection	% of City	Deviation From Average
District 1	15,793	42.0	68.0%	17,261	43.3	73.2%
District 2	6,968	18.5	-25.9%	7,229	18.1	-27.5%
District 3	10,552	28.1	12.2%	10,796	27.1	8.3%
District 4	4,291	11.4	-54.4%	4,579	11.5	-54.1%
Total	37,604	100	160.5%	39,865	100	163.0%
Average	9,401	25	40.1%	9,966	25	40.8%

Next Steps:

- Part 2
 - Election Districts are severely out of balance, as a by-product of not amending the election districts through redistricting in over 40 years
 - City needs to Redistrict
 - The overall pattern of district boundary changes will need to increase the population of Districts 2 and 4, while significantly reducing that of District 1
 - This, in turn, will require large areal changes to those districts, with each adjustment impacting the surrounding districts in a cascading manner
 - Creation of **3 map alternatives** for Council consideration

Redistricting Parameters

- The following guide our efforts:
 1. Reasonable population equality across districts
 - A maximum 8% overall deviation from the ideal size across districts (per the Charter)
 - Adhere to Section 2 of the Voting Rights Act of 1965: Arbitrary dilution of minority population clusters and other discriminatory practices are prohibited
 2. Geographic contiguity and appropriate compactness
 - Seek spatially compact districts
 - Follow major natural and manmade boundaries where possible
 - Respect for the integrity of communities of interest
 - Minimize the degree of change in pre-existing patterns of districts to the extent possible
- Population equality is of primary importance
 - The others are significant in guiding decisions toward reasonable population balance

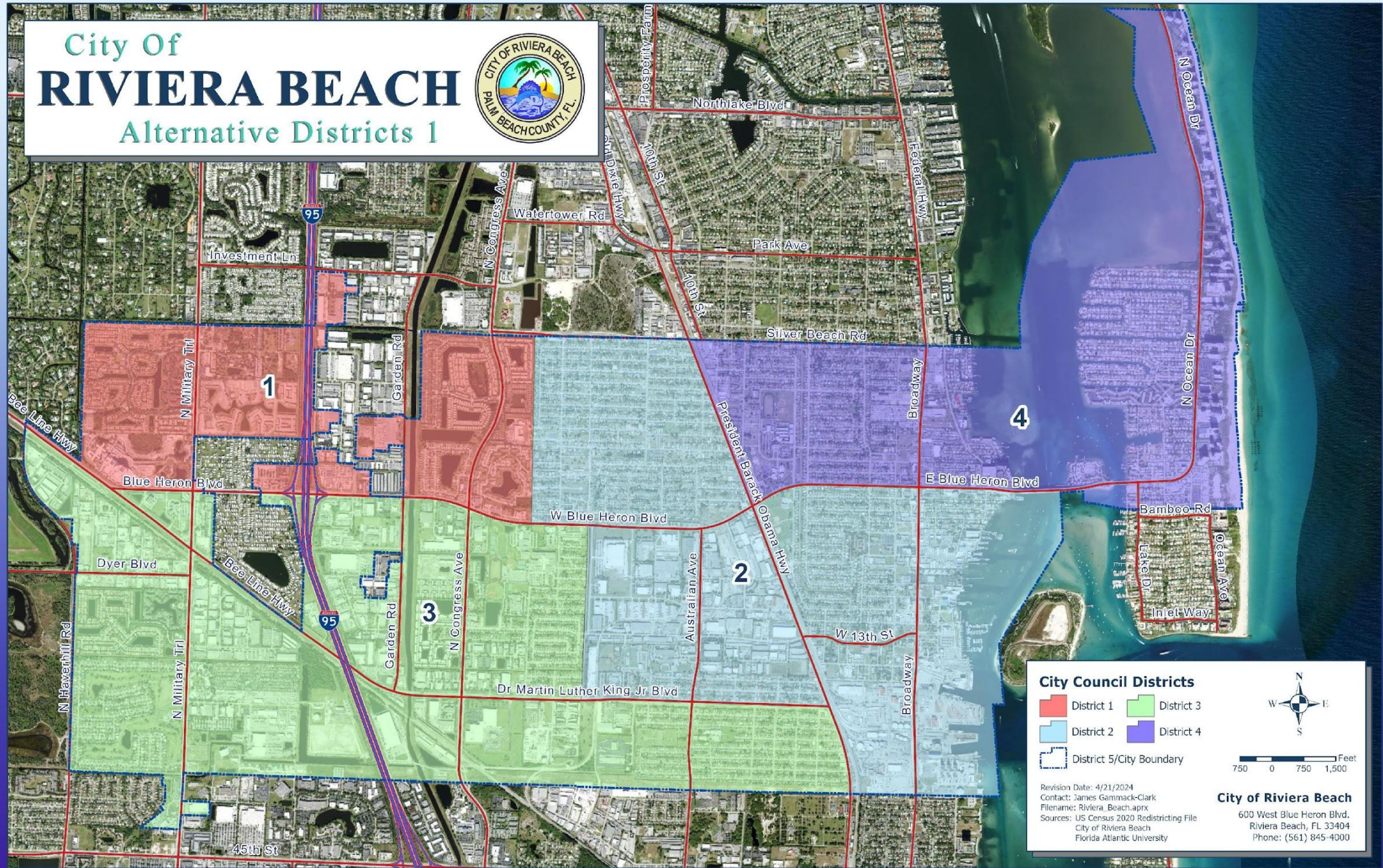
Redistricting Parameters (House Bill No. 411)

1. Districts may not be drawn with the intent to favor or disfavor a candidate for, or a member of, the governing body based on their residential address
2. Each municipality shall... [create districts that are] as nearly equal in proportion to their respective populations as practicable
3. Such changes may not be made in the 270 days before a regular general election for the governing body of the municipality

The City's next election will be on March 11, 2025. Thus, consistent with this statute, new districts should be adopted before June 14, 2024

City Of RIVIERA BEACH

Alternative Districts 1



City Council Districts

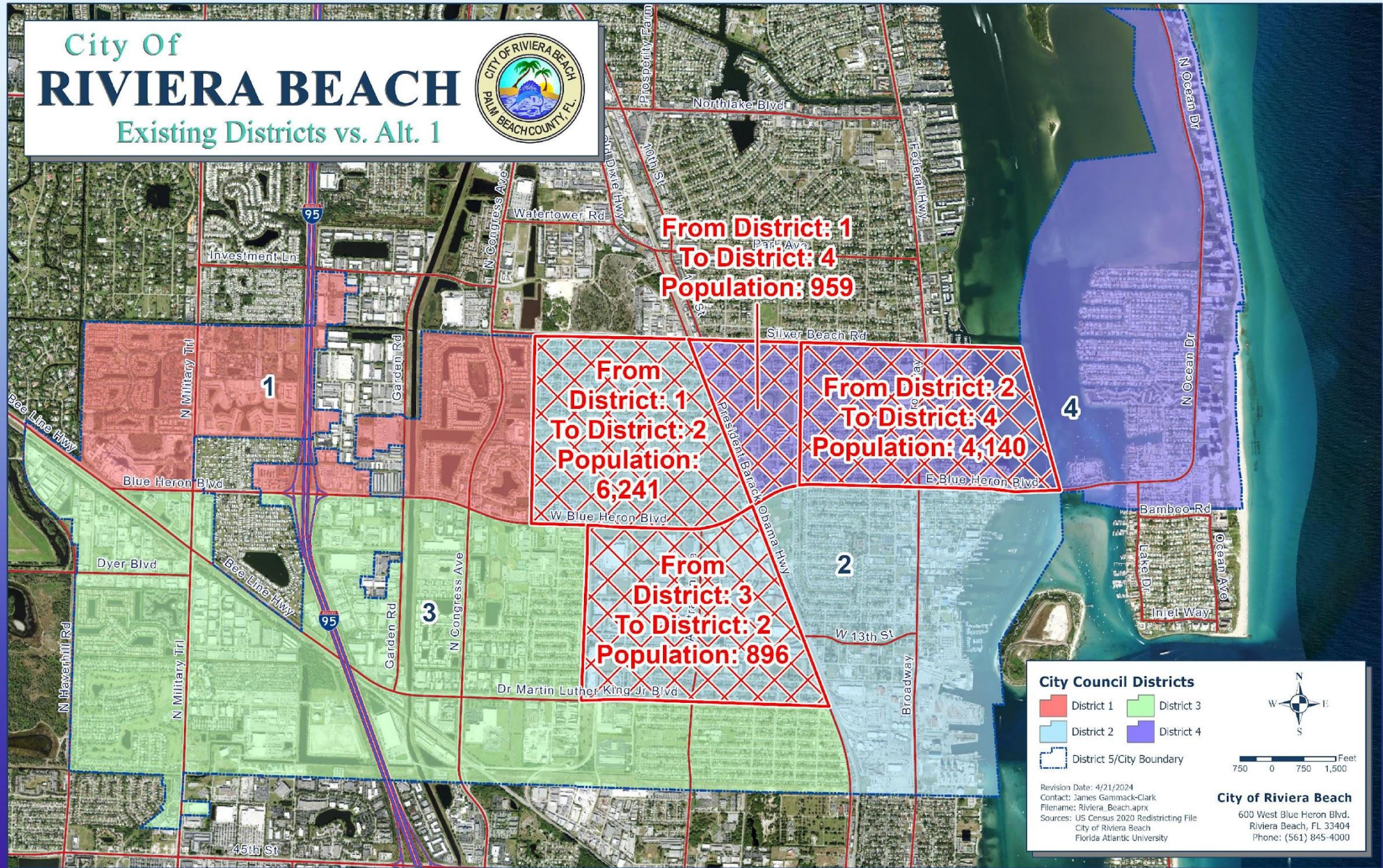
 District 1	 District 3
 District 2	 District 4
 District 5/City Boundary	

Revision Date: 4/21/2024
 Contact: James Gammack-Clark
 Filename: Riviera_Beach.aprx
 Sources: US Census 2020 Redistricting File
 City of Riviera Beach
 Florida Atlantic University

City of Riviera Beach
 600 West Blue Heron Blvd.
 Riviera Beach, FL 33404
 Phone: (561) 845-4000

City Of RIVIERA BEACH

Existing Districts vs. Alt. 1



**From District: 1
To District: 4
Population: 959**

**From District: 1
To District: 2
Population: 6,241**

**From District: 2
To District: 4
Population: 4,140**

**From District: 3
To District: 2
Population: 896**

City Council Districts

- District 1
- District 2
- District 3
- District 4
- District 5/City Boundary

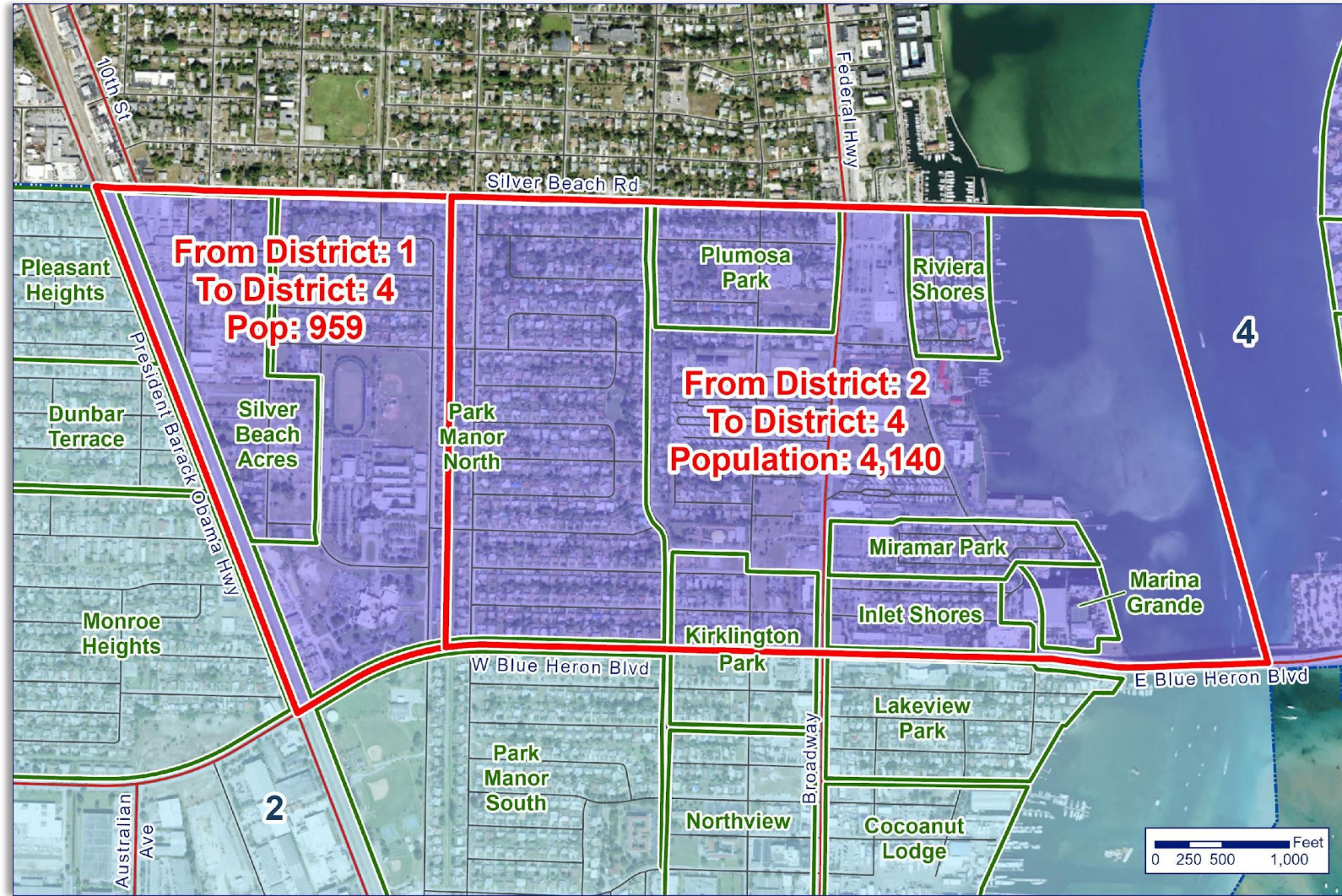


Revision Date: 4/21/2024
 Contact: James Gammack-Clark
 Filename: Riviera_Beach.aprx
 Sources: US Census 2020 Redistricting File
 City of Riviera Beach
 Florida Atlantic University

City of Riviera Beach
 600 West Blue Heron Blvd.
 Riviera Beach, FL 33404
 Phone: (561) 845-4000

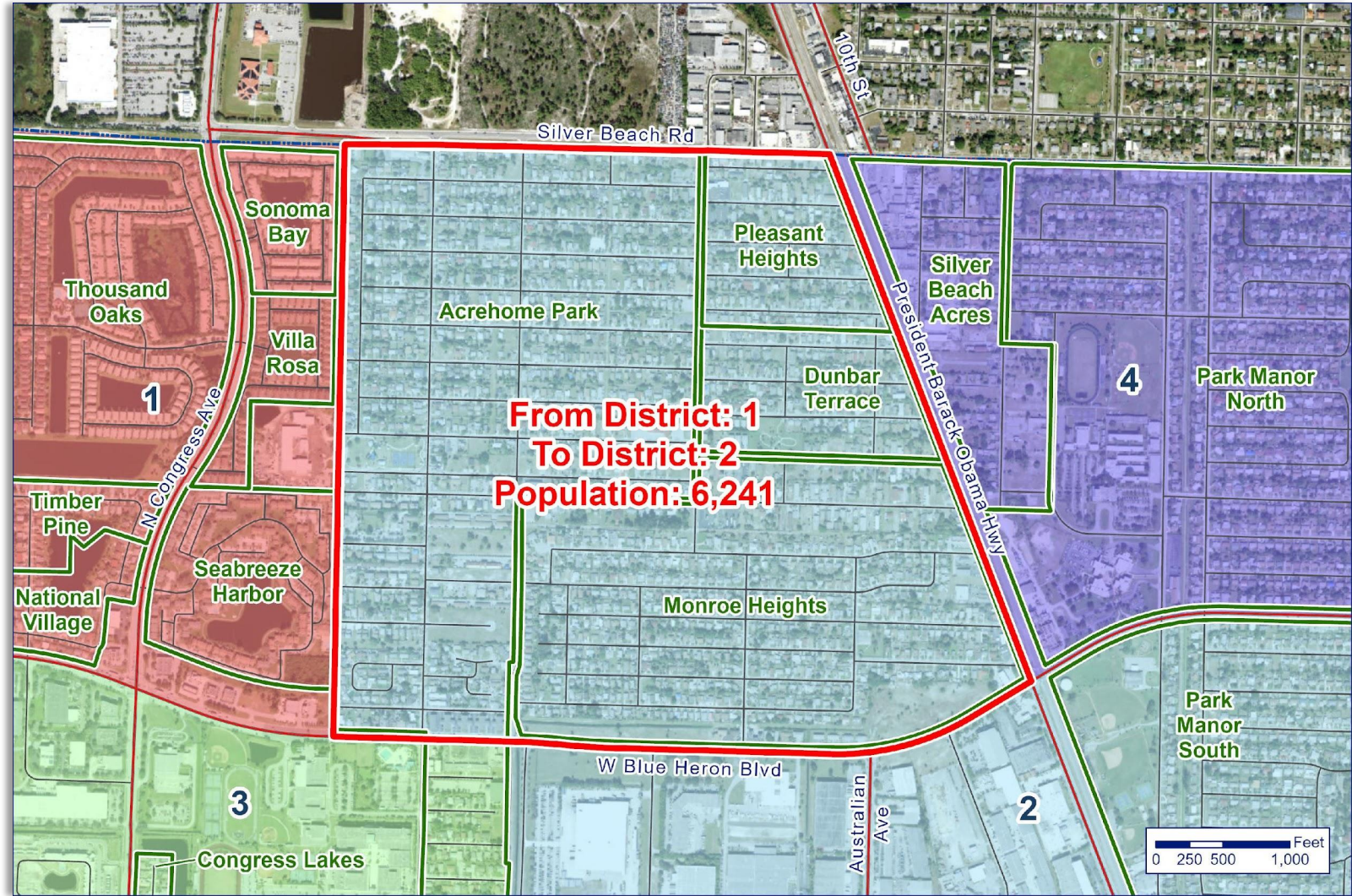
Alternative 1

- District 4 expands west across the Intracoastal to President Barack Obama Highway, north of Blue Heron Boulevard
- Adds 4,140 people to District 4 from District 2 and 959 from District 1



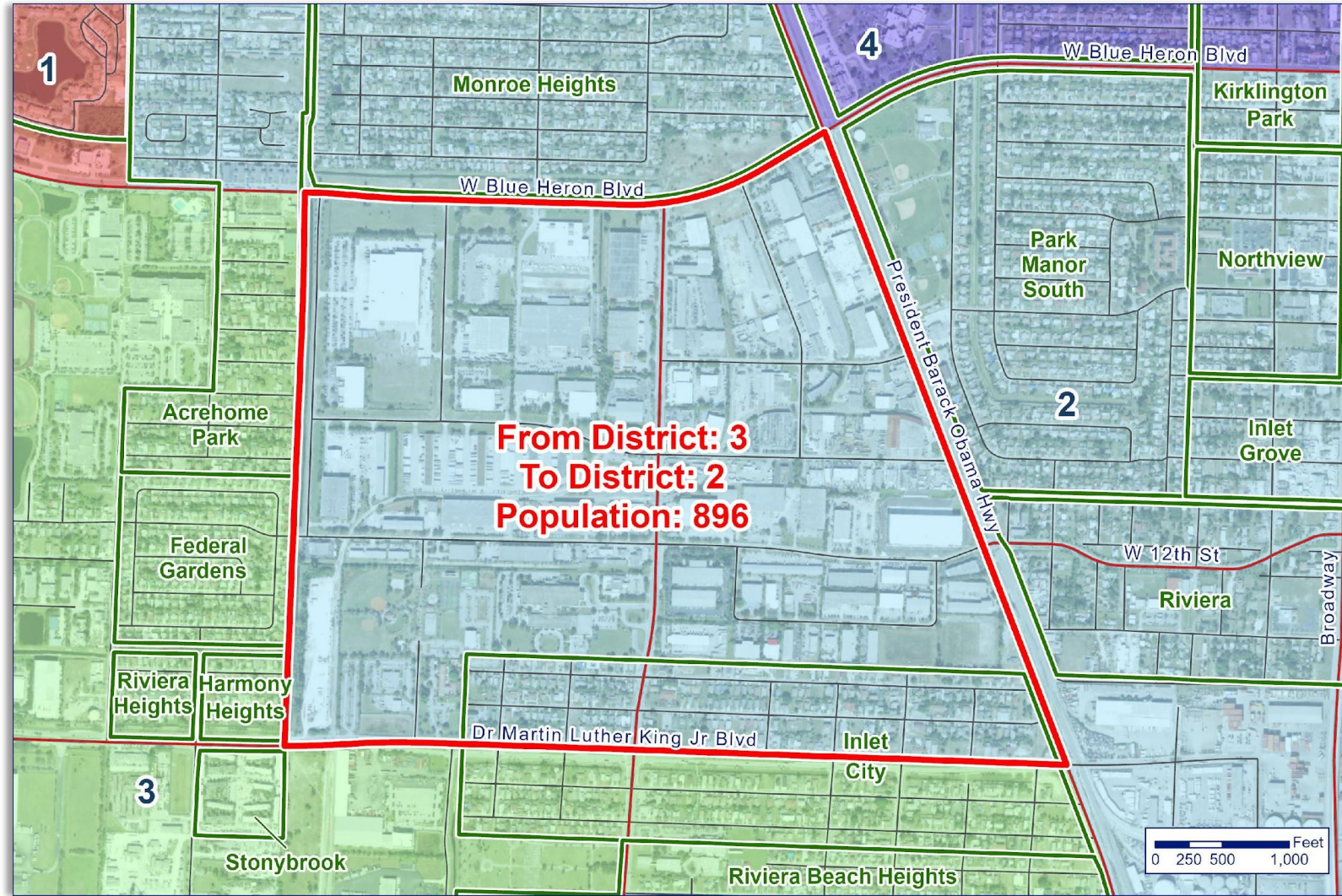
Alternative 1

- District 1 contracts west to the easterly boundary of the Seabreeze Harbor (aka Wedgewood Plaza) subdivision
- Reducing its population by 6,241 people
- This area and its residents are absorbed by District 2





Alternative 1

- District 3 contracts south to Dr. Martin Luther King Jr Boulevard, east of the Acrehome Park, Federal Gardens, and Harmony Heights subdivisions.
- This area and its 896 residents are also absorbed by District 2



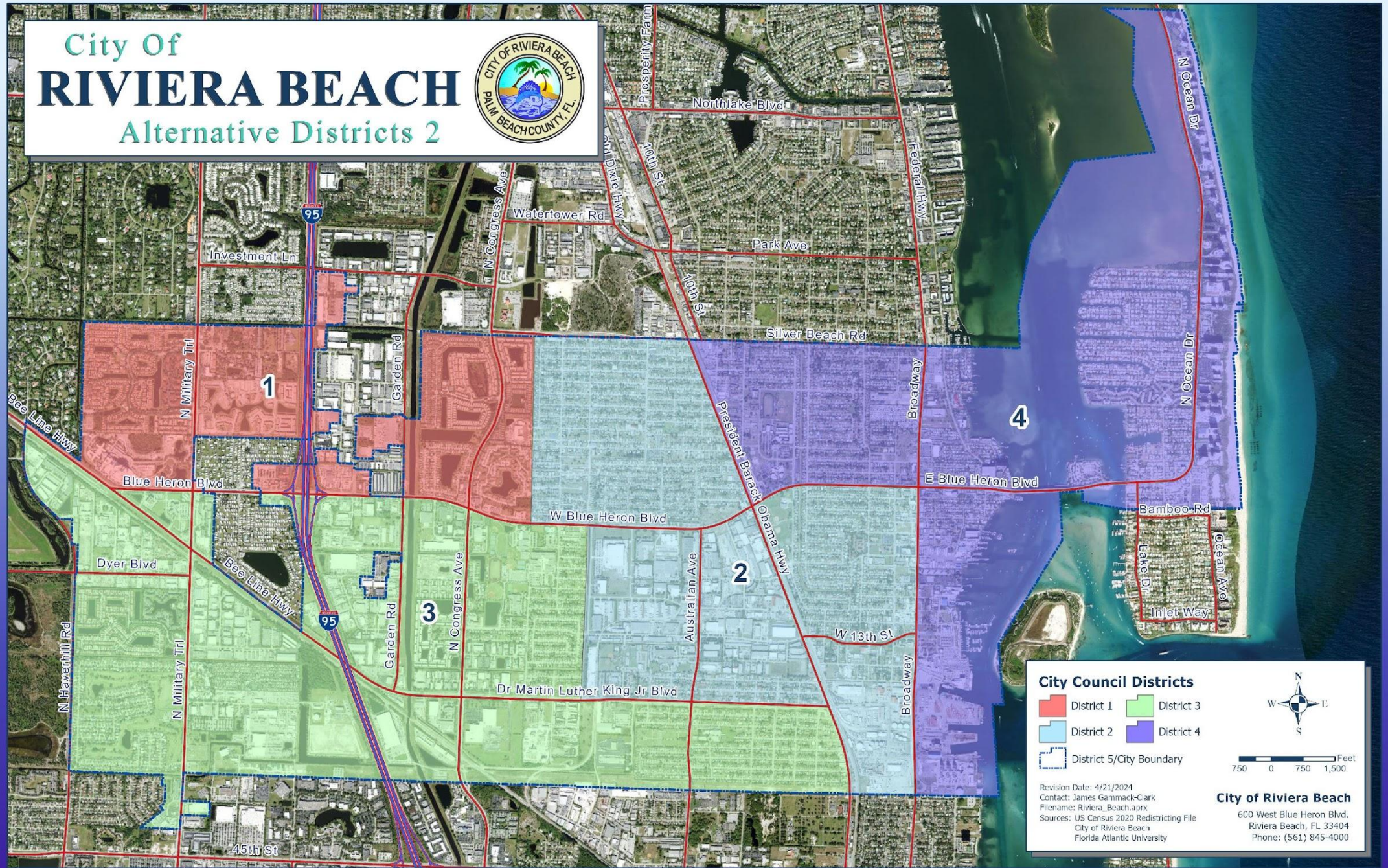
Alternative 1

- Overall Deviation is much improved under Alternative 1
 - Total Deviation falls from 163% to 7.1%
 - Mean Deviation falls from 40.8% to 1.8%
 - The Spread falls from 127.3% to 5.5%

Alternative 1	2024 Population	% of City	Deviation From Average
District 1	10,061	25.2	1.0%
District 2	10,226	25.7	2.6% 
District 3	9,900	24.8	-0.7%
District 4	9,678	24.3	-2.9% 
Total	39,865	100	7.1%
Average	9,966	25	1.8%

City Of RIVIERA BEACH

Alternative Districts 2



City Council Districts

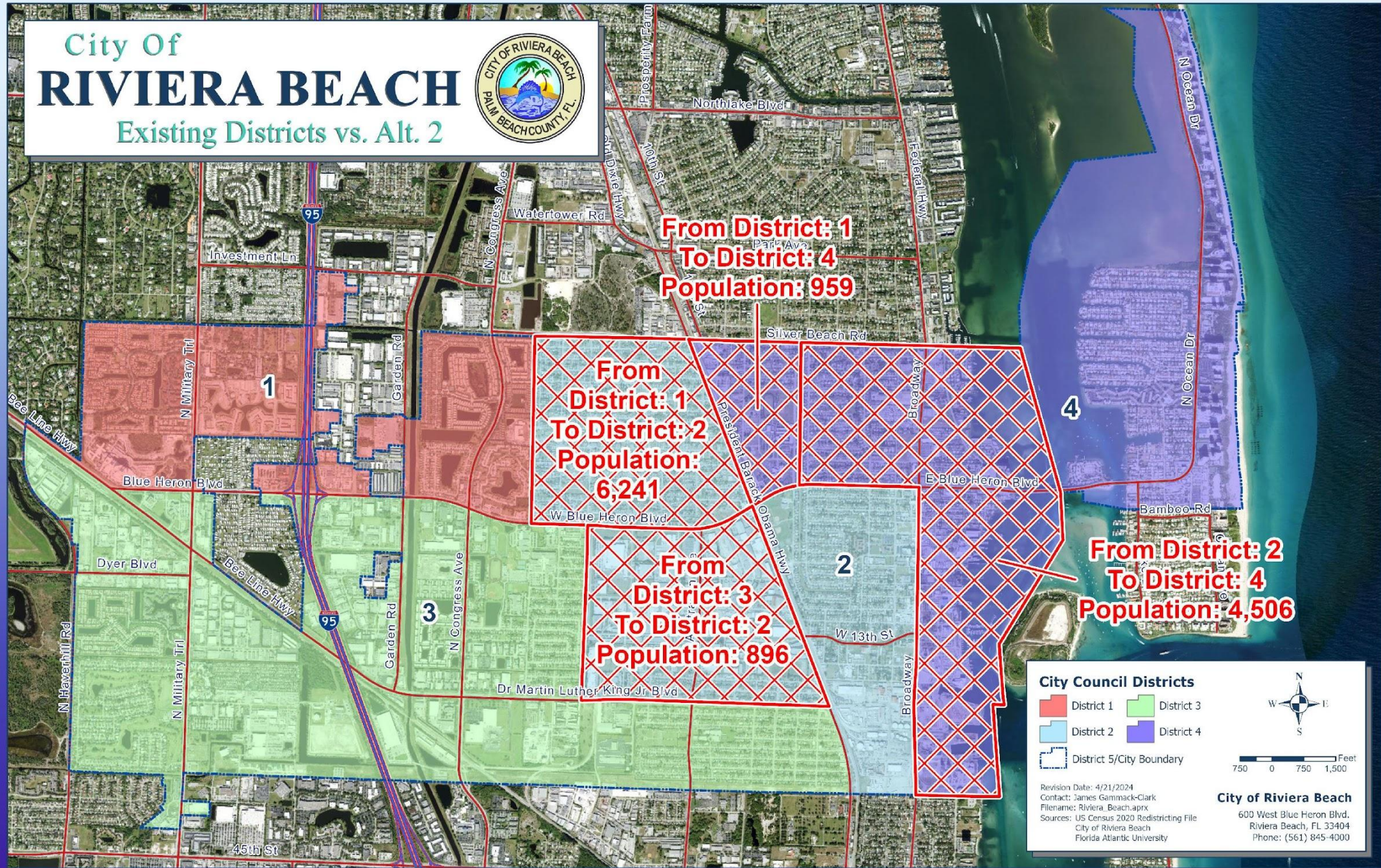
■ District 1	■ District 3
■ District 2	■ District 4
 District 5/City Boundary	

Revision Date: 4/21/2024
 Contact: James Gammack-Clark
 Filename: Riviera_Beach.aprx
 Sources: US Census 2020 Redistricting File
 City of Riviera Beach
 Florida Atlantic University

City of Riviera Beach
 600 West Blue Heron Blvd.
 Riviera Beach, FL 33404
 Phone: (561) 845-4000

City Of RIVIERA BEACH

Existing Districts vs. Alt. 2



**From District: 1
To District: 4
Population: 959**

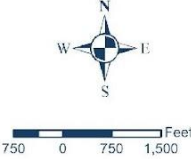
**From District: 1
To District: 2
Population: 6,241**

**From District: 3
To District: 2
Population: 896**

**From District: 2
To District: 4
Population: 4,506**

City Council Districts

- District 1
- District 2
- District 3
- District 4
- District 5/City Boundary

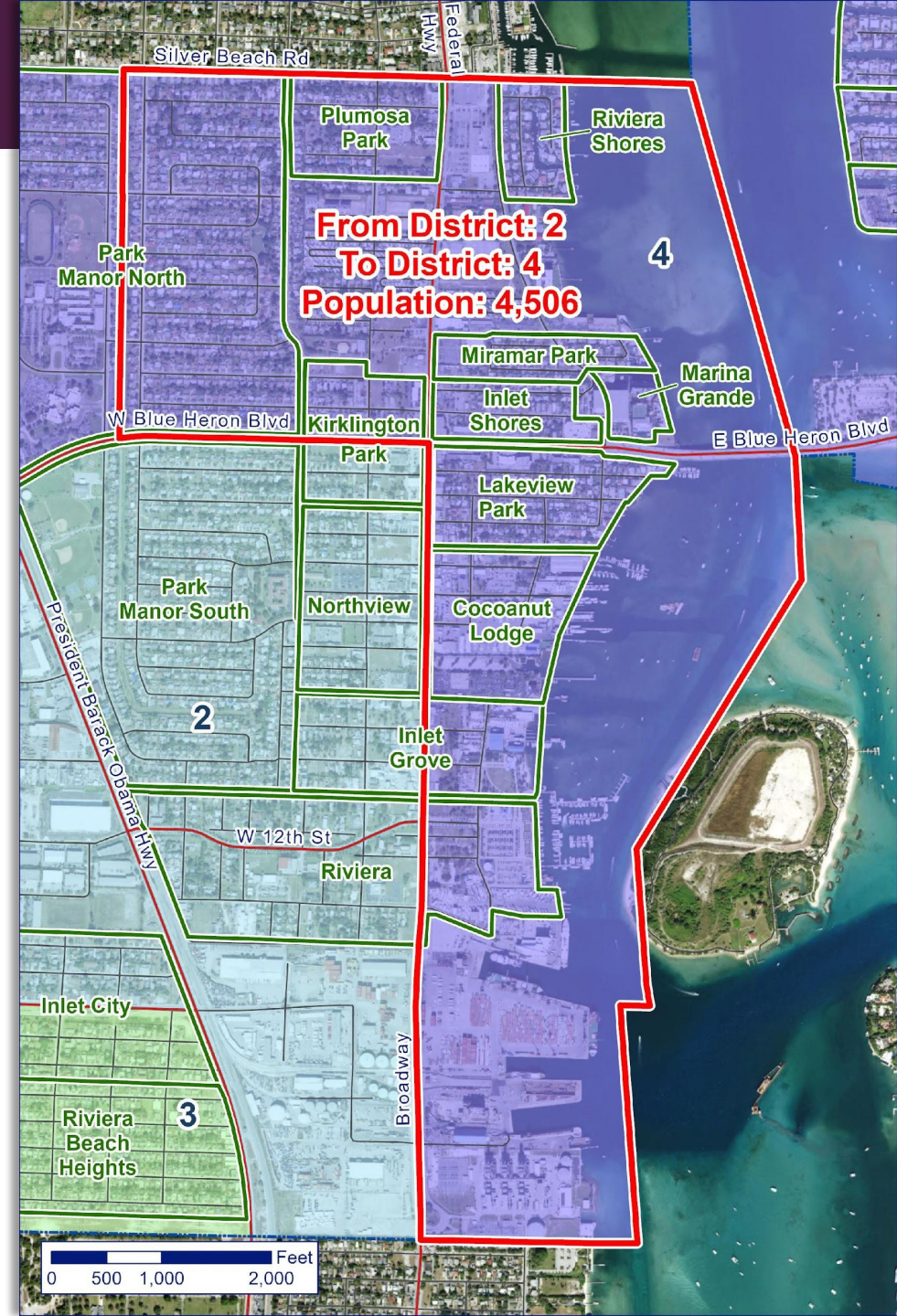


Revision Date: 4/21/2024
 Contact: James Gammack-Clark
 Filename: Riviera_Beach.aprx
 Sources: US Census 2020 Redistricting File
 City of Riviera Beach
 Florida Atlantic University

City of Riviera Beach
 600 West Blue Heron Blvd.
 Riviera Beach, FL 33404
 Phone: (561) 845-4000

Alternative 2

- Alternative 2 is a variant of Alternative 1
- Seeks additional population equity by including a southerly expansion for District 4 along the eastern side of Broadway
- Overall, this move adds 4,506 people to District 4
- The other adjustments described in Alternative 1 are retained



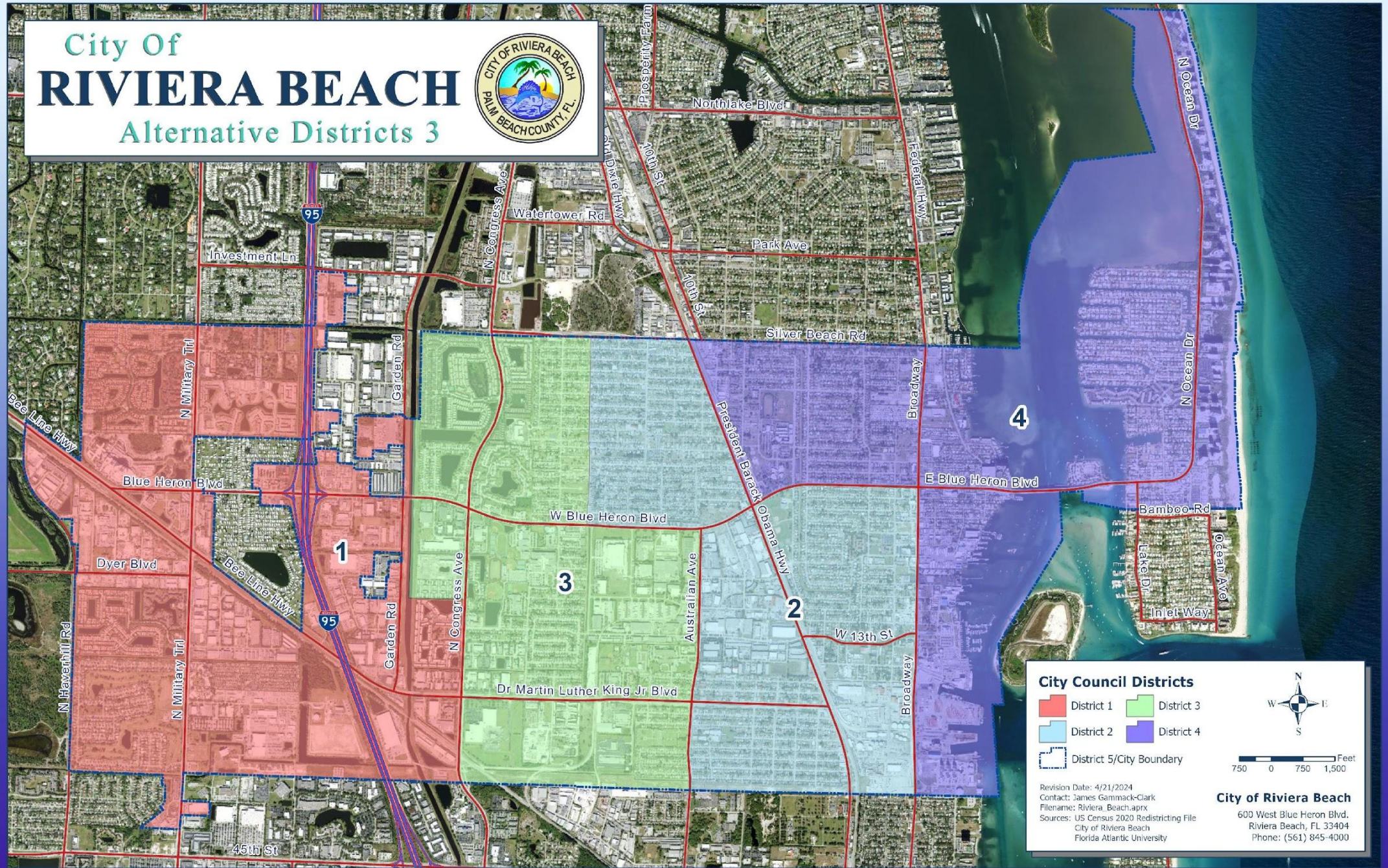
Alternative 2

- Overall Deviation is much improved under Alternative 2
 - Total Deviation falls from 163% to 3.5% (lowest of the alternatives)
 - Mean Deviation falls from 40.8% to 0.9% (lowest of the alternatives)
 - The Spread falls from 127.3% to 2.1% (lowest of the alternatives)

Alternative 2	2024 Population	% of City	Deviation From Average
District 1	10,061	25.2	1.0%
District 2	9,860	24.7	-1.1%
District 3	9,900	24.8	-0.7%
District 4	10,044	25.2	0.8%
Total	39,865	100	3.5%
Average	9,966	25	0.9%

City Of RIVIERA BEACH

Alternative Districts 3



City Council Districts

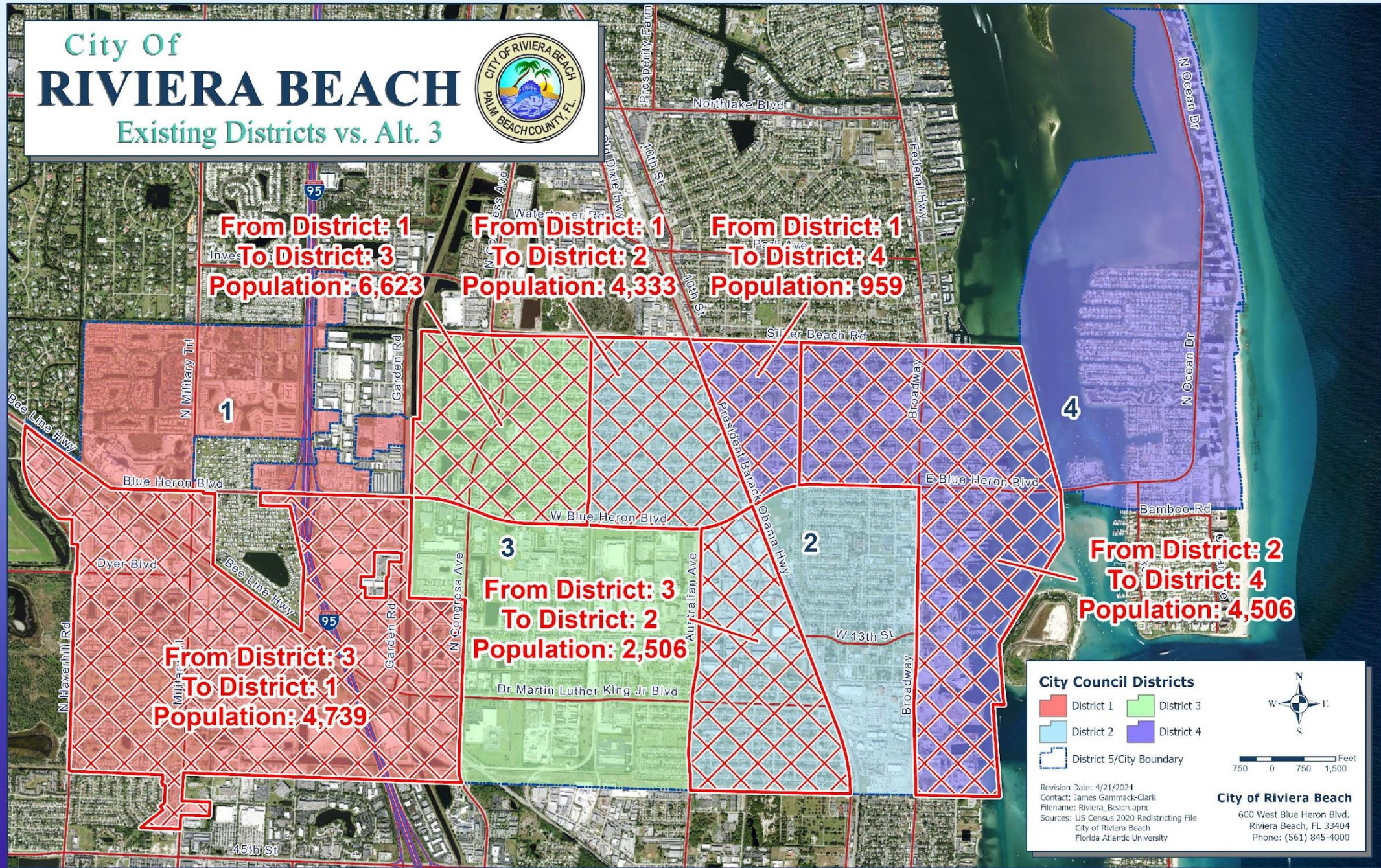
- District 1
- District 2
- District 3
- District 4
- District 5/City Boundary

Revision Date: 4/21/2024
 Contact: James Gammack-Clark
 Filename: Riviera_Beach.aprx
 Sources: US Census 2020 Redistricting File
 City of Riviera Beach
 Florida Atlantic University

City of Riviera Beach
 600 West Blue Heron Blvd.
 Riviera Beach, FL 33404
 Phone: (561) 845-4000

City Of RIVIERA BEACH

Existing Districts vs. Alt. 3



**From District: 1
To District: 3
Population: 6,623**

**From District: 1
To District: 2
Population: 4,333**

**From District: 1
To District: 4
Population: 959**

**From District: 3
To District: 1
Population: 4,739**

**From District: 3
To District: 2
Population: 2,506**

**From District: 2
To District: 4
Population: 4,506**

City Council Districts

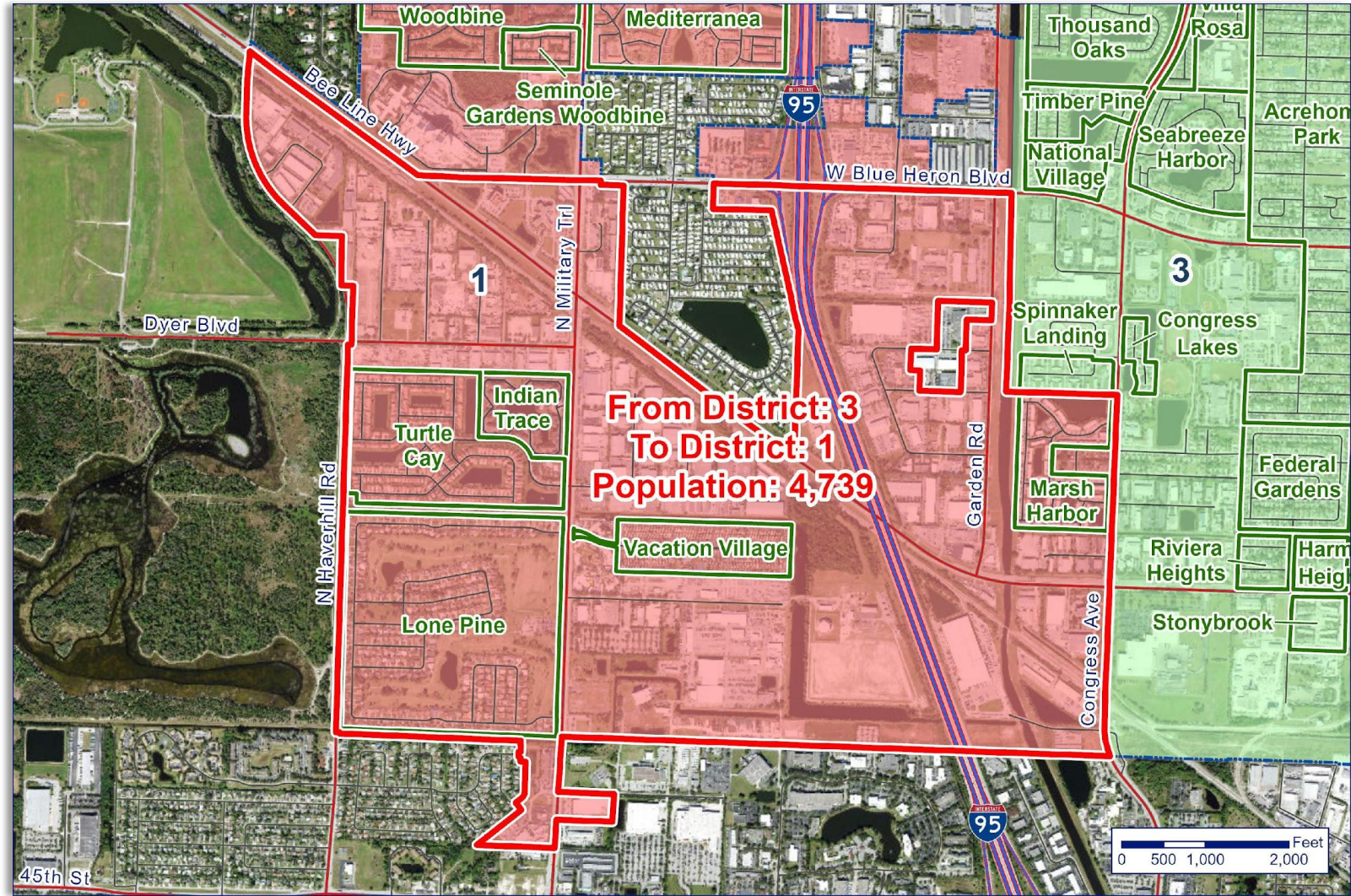
- District 1
- District 2
- District 3
- District 4
- District 5/City Boundary

Revision Date: 4/21/2024
 Contact: James Gammack-Clark
 Filename: Riviera_Beach.aprx
 Sources: US Census 2020 Redistricting File
 City of Riviera Beach
 Florida Atlantic University

City of Riviera Beach
 600 West Blue Heron Blvd.
 Riviera Beach, FL 33404
 Phone: (561) 845-4000

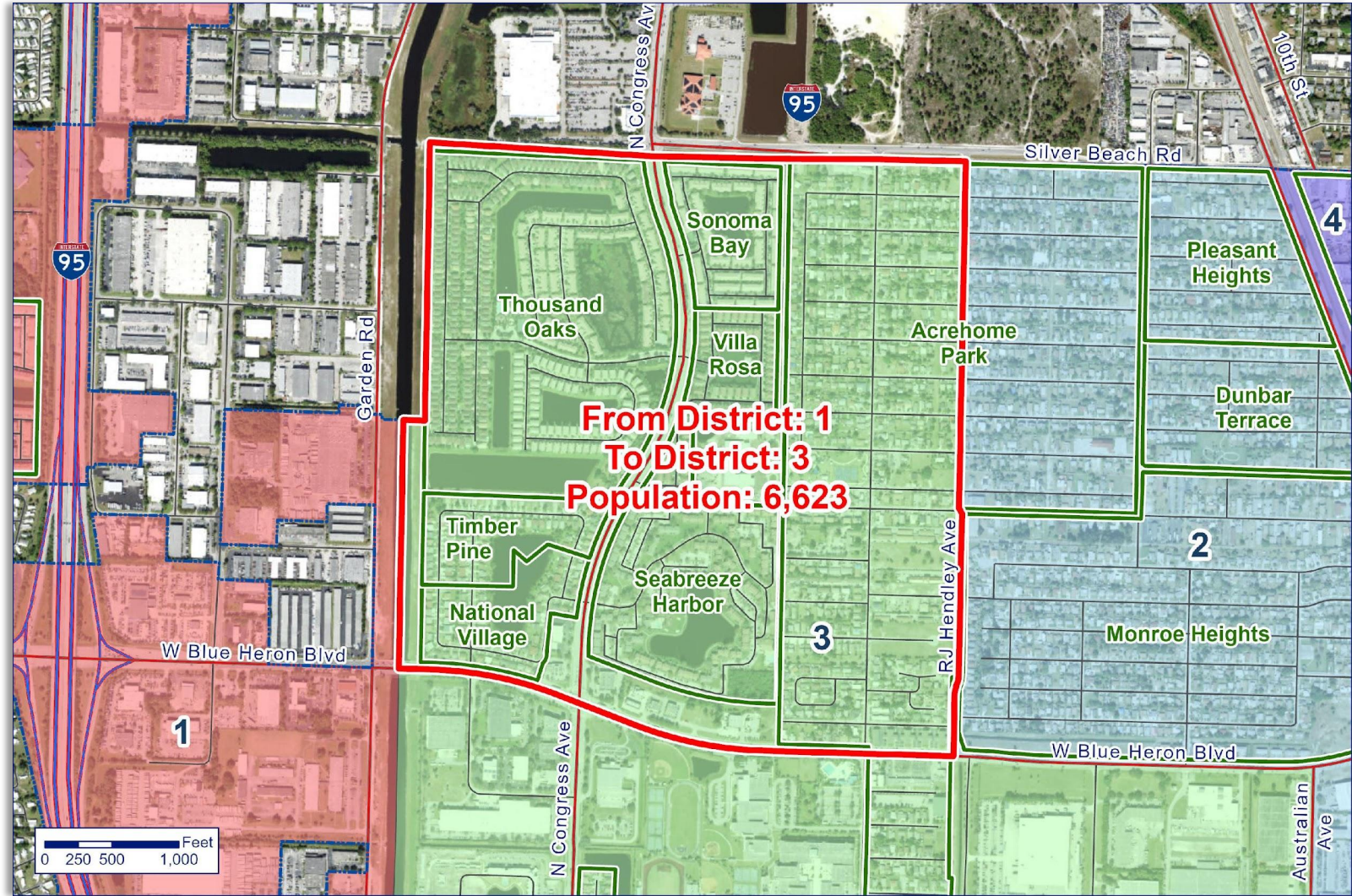
Alternative 3

- District 1 retains the NW corner of the city, west of the centerline of the C-17 canal.
- Its eastern border then continues south of Blue Heron Blvd along the C-17 canal as far as the Marsh Harbour subdivision.
- It then jogs east to Congress Ave and then south to the city limits.
- District 1 becomes the city's western district, absorbing 4,739 people from District 3



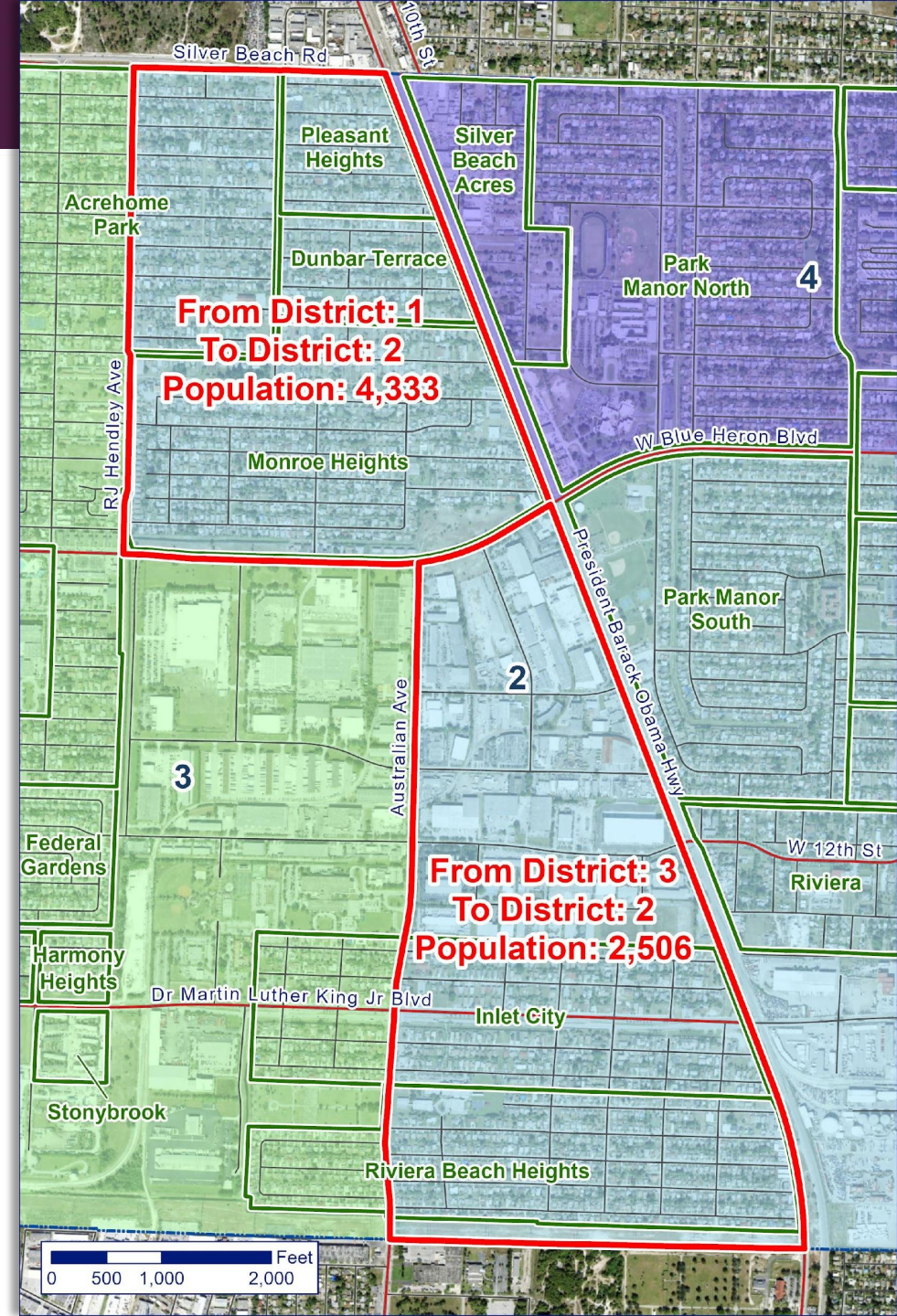
Alternative 3

- District 3 retains the area south of Blue Heron Boulevard, west of Australian Avenue.
- It gains that part of the city north of Blue Heron Boulevard, east of the C-17 canal, and west of RJ Hendley Avenue.
 - (Note: this splits the Acrehome Park subdivision between districts 2 and 3.)
- 6,623 people are moved from District 1 to District 3.



Alternative 3

- District 2 is composed of:
 - That part of the city north of Blue Heron Boulevard between RJ Hendley Avenue and President Barack Obama Highway
 - 4,333 people are moved from District 1 to District 2
 - the area south of Blue Heron Boulevard between Australian Avenue and Broadway.
 - 2,506 people are moved from District 3 to District 2
- The adjustments to District 4 described in Alternative 2 are retained



Alternative 3

- Overall Deviation is much improved under Alternative 3
 - Total Deviation falls from 163% to 8.1%,
 - Mean Deviation falls from 40.8% to 2.0%
 - The Spread falls from 127.3% to 6.2%

Alternative 3	2024 Population	% of City	Deviation From Average
District 1	10,085	25.3	1.2%
District 2	9,562	24.0	-4.1%
District 3	10,174	25.5	2.1%
District 4	10,044	25.2	0.8%
Total	39,865	100	8.1%
Average	9,966	25	2.0%

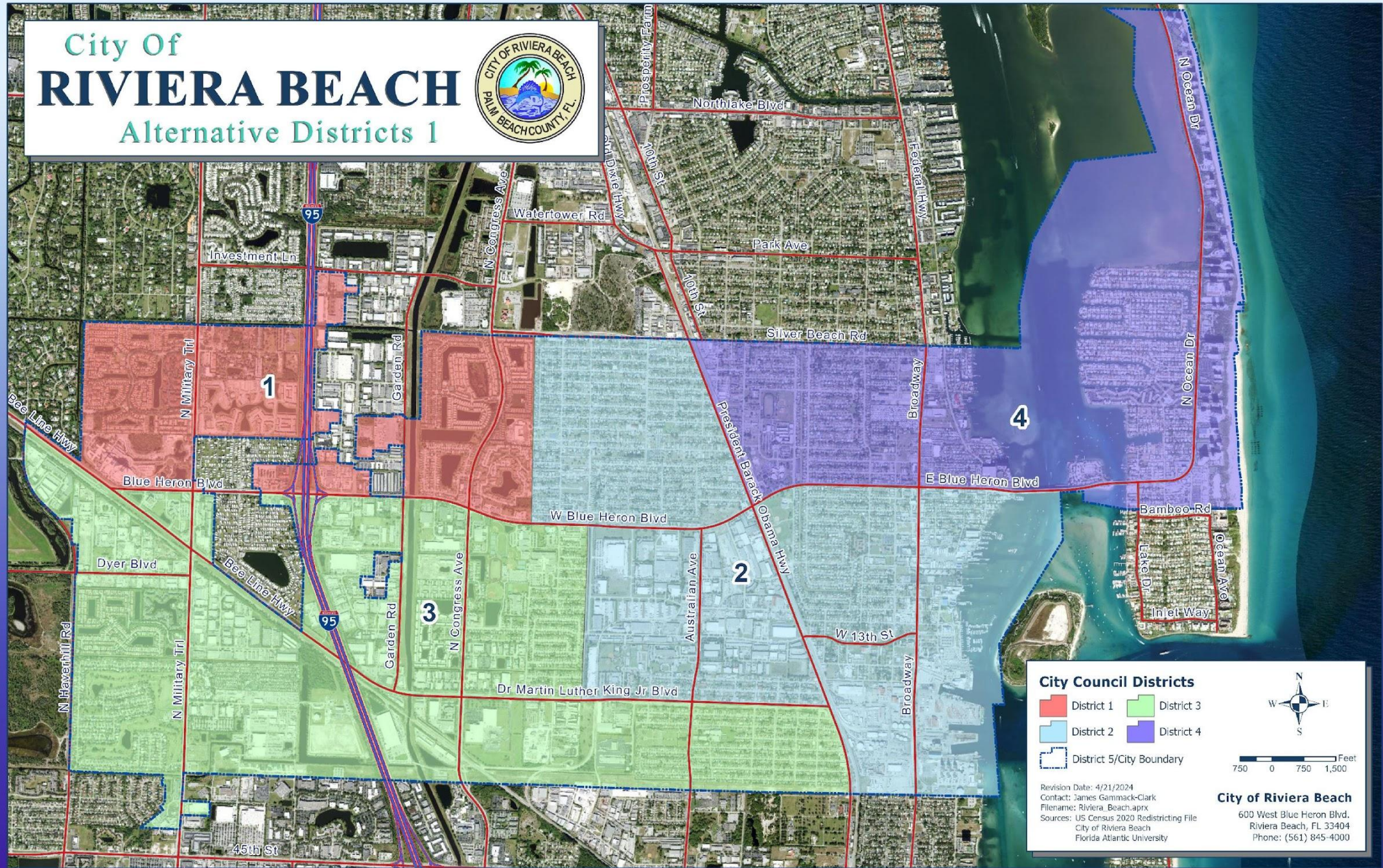
Summary

- Each alternative dramatically improves population equity
 - Alternative 1 makes the minimal geographic adjustments necessary to the existing boundaries to achieve reasonable population equity
 - Alternative 2 is the most balanced
 - Alternative 3 draws the district boundaries in a primarily N-S direction

Configuration	Impacted Population	Total Deviation	Mean Deviation	Spread
Existing Districts	N/A	163.0	40.8	127.3
Alternative 1	12,236	7.1	1.8	5.5
Alternative 2	12,602	3.5	0.9	2.1
Alternative 3	23,666	8.1	2.0	6.2

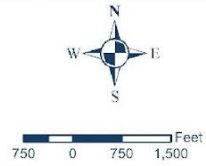
City Of RIVIERA BEACH

Alternative Districts 1



City Council Districts

- District 1
- District 3
- District 2
- District 4
- District 5/City Boundary

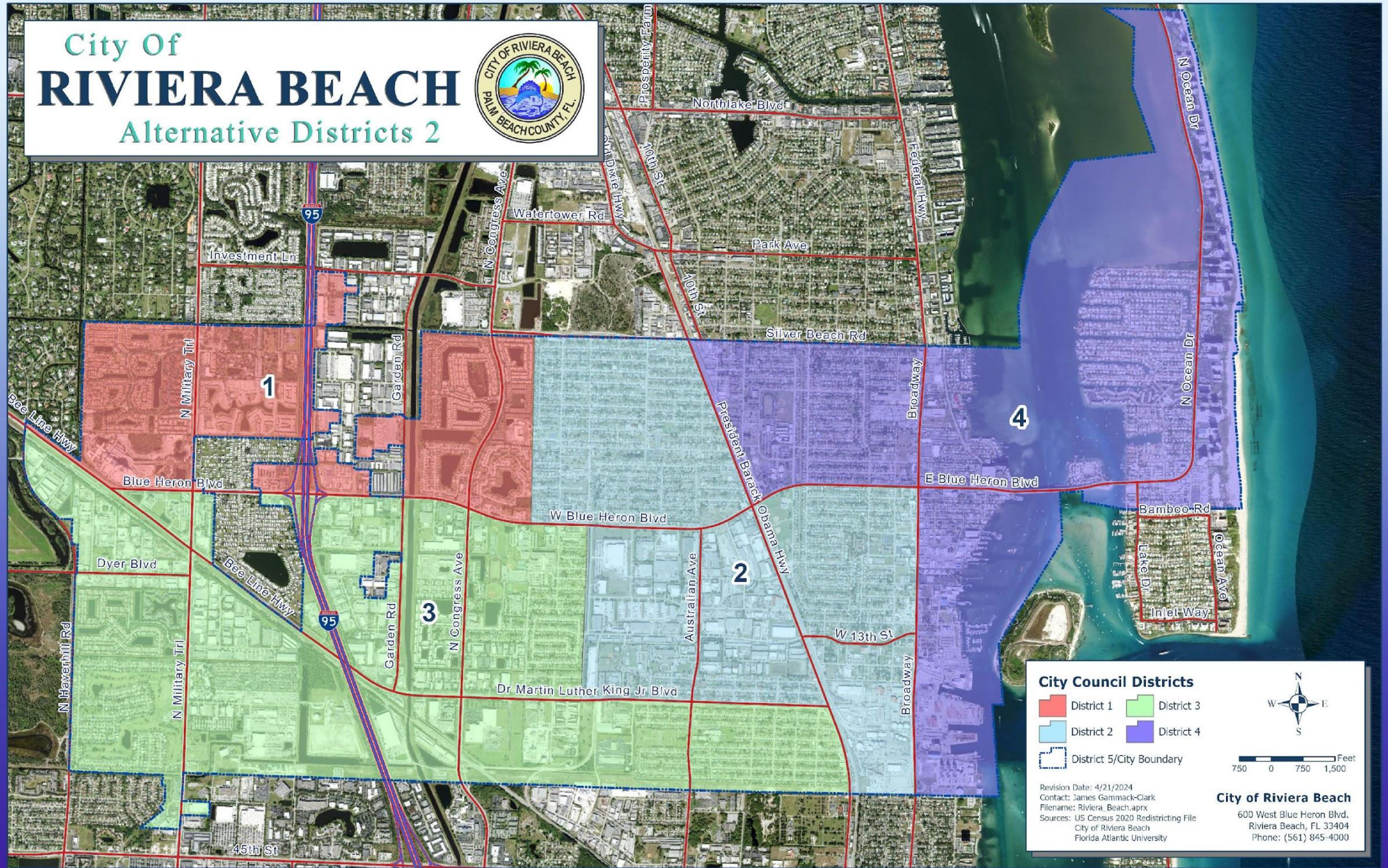


Revision Date: 4/21/2024
 Contact: James Gammack-Clark
 Filename: Riviera_Beach.aprx
 Sources: US Census 2020 Redistricting File
 City of Riviera Beach
 Florida Atlantic University

City of Riviera Beach
 600 West Blue Heron Blvd.
 Riviera Beach, FL 33404
 Phone: (561) 845-4000

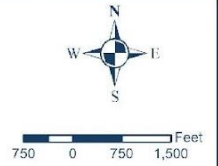
City Of RIVIERA BEACH

Alternative Districts 2



City Council Districts

- District 1
- District 2
- District 3
- District 4
- District 5/City Boundary

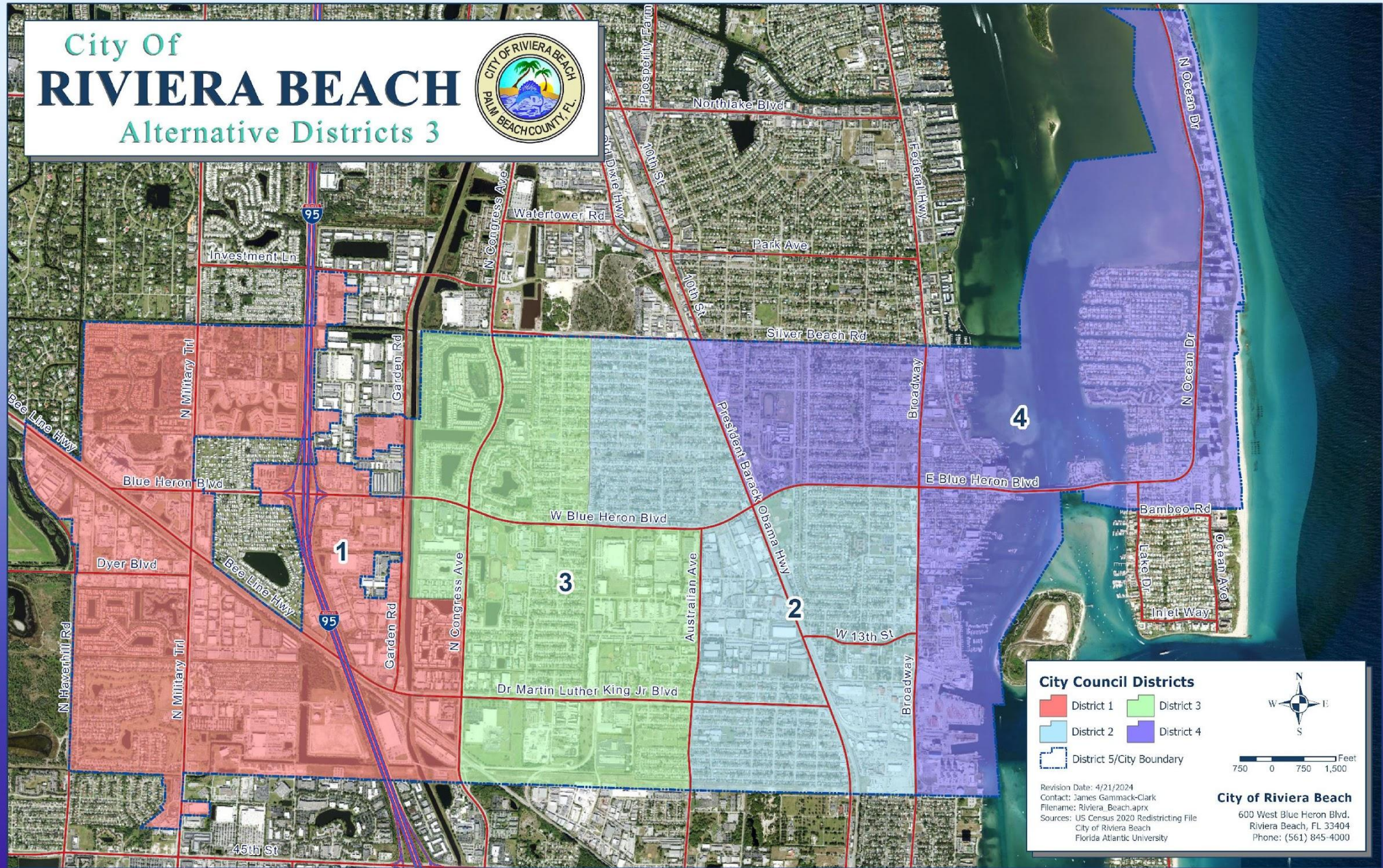


Revision Date: 4/21/2024
 Contact: James Gammack-Clark
 Filename: Riviera_Beach.aprx
 Sources: US Census 2020 Redistricting File
 City of Riviera Beach
 Florida Atlantic University

City of Riviera Beach
 600 West Blue Heron Blvd.
 Riviera Beach, FL 33404
 Phone: (561) 845-4000

City Of RIVIERA BEACH

Alternative Districts 3



City Council Districts

■ District 1	■ District 3
■ District 2	■ District 4
 District 5/City Boundary	

Revision Date: 4/21/2024
 Contact: James Gammack-Clark
 Filename: Riviera_Beach.aprx
 Sources: US Census 2020 Redistricting File
 City of Riviera Beach
 Florida Atlantic University

City of Riviera Beach
 600 West Blue Heron Blvd.
 Riviera Beach, FL 33404
 Phone: (561) 845-4000

City Of RIVIERA BEACH

Existing Districts vs. Alt. 1



From District: 1
To District: 4
Population: 959

From District: 1
To District: 2
Population: 6,241

From District: 2
To District: 4
Population: 4,140

From District: 3
To District: 2
Population: 896

QUESTIONS?

City Of RIVIERA BEACH Alternative Districts 2



City Of RIVIERA BEACH Alternative Districts 3



May 23, 2024 •
City of Riviera Beach, Florida

City Council Districts

- District 1
- District 2
- District 3
- District 4
- District 5/City Boundary

City of Riviera Beach
800 West Blue Horizon Blvd.
Riviera Beach, FL 33404
Phone: (561) 995-4300

District (Existing)	Total Population	White	Black or African American	American Indian and Alaska Native	Asian	Native Hawaiian and Other Pacific Islander	Other	Hispanic or Latino	Not Hispanic or Latino
1	15,793	2,785 (17.63%)	10,342 (65.48%)	51 (0.32%)	644 (4.08%)	10 (0.06%)	1,962 (12.42%)	2,019 (12.78%)	13,775 (87.22%)
2	6,968	1,691 (24.27%)	4,410 (63.29%)	28 (0.4%)	57 (0.82%)	1 (0.01%)	780 (11.19%)	897 (12.87%)	6,070 (87.11%)
3	10,552	928 (8.79%)	8,374 (79.36%)	37 (0.35%)	315 (2.99%)	4 (0.04%)	894 (8.47%)	894 (8.47%)	9,658 (91.53%)
4	4,291	3,810 (88.79%)	81 (1.89%)	2 (0.05%)	95 (2.21%)	0 (0%)	303 (7.06%)	230 (5.36%)	4,061 (94.64%)
	37,604	9,214 (24.5%)	23,207 (61.71%)	118 (0.31%)	1,111 (2.95%)	15 (0.04%)	3,939 (10.47%)	4,040 (10.74%)	33,564 (89.26%)

District (Alt 1)	Total Population	White	Black or African American	American Indian and Alaska Native	Asian	Native Hawaiian and Other Pacific Islander	Other	Hispanic or Latino	Not Hispanic or Latino
1	8,681	2,432 (28.02%)	4,149 (47.79%)	32 (0.37%)	597 (6.88%)	2 (0.02%)	1,469 (16.92%)	1,577 (18.17%)	7,105 (81.85%)
2	10,131	882 (8.71%)	8,433 (83.24%)	24 (0.24%)	60 (0.59%)	9 (0.09%)	723 (7.14%)	684 (6.75%)	9,446 (93.24%)
3	9,662	881 (9.12%)	7,578 (78.43%)	36 (0.37%)	315 (3.26%)	3 (0.03%)	849 (8.79%)	836 (8.65%)	8,826 (91.35%)
4	9,130	5,019 (54.97%)	3,047 (33.37%)	26 (0.28%)	139 (1.52%)	1 (0.01%)	898 (9.84%)	943 (10.33%)	8,187 (89.67%)
	37,604	9,214 (24.5%)	23,207 (61.71%)	118 (0.31%)	1,111 (2.95%)	15 (0.04%)	3,939 (10.47%)	4,040 (10.74%)	33,564 (89.26%)

District (Alt 2)	Total Population	White	Black or African American	American Indian and Alaska Native	Asian	Native Hawaiian and Other Pacific Islander	Other	Hispanic or Latino	Not Hispanic or Latino
1	8,681	2,432 (28.02%)	4,149 (47.79%)	32 (0.37%)	597 (6.88%)	2 (0.02%)	1,469 (16.92%)	1,577 (18.17%)	7,105 (81.85%)
2	9,774	652 (6.67%)	8,353 (85.46%)	23 (0.24%)	52 (0.53%)	9 (0.09%)	685 (7.01%)	654 (6.69%)	9,119 (93.3%)
3	9,662	881 (9.12%)	7,578 (78.43%)	36 (0.37%)	315 (3.26%)	3 (0.03%)	849 (8.79%)	836 (8.65%)	8,826 (91.35%)
4	9,487	5,249 (55.33%)	3,127 (32.96%)	27 (0.28%)	147 (1.55%)	1 (0.01%)	936 (9.87%)	973 (10.26%)	8,514 (89.74%)
	37,604	9,214 (24.5%)	23,207 (61.71%)	118 (0.31%)	1,111 (2.95%)	15 (0.04%)	3,939 (10.47%)	4,040 (10.74%)	33,564 (89.26%)

District (Alt 3)	Total Population	White	Black or African American	American Indian and Alaska Native	Asian	Native Hawaiian and Other Pacific Islander	Other	Hispanic or Latino	Not Hispanic or Latino
1	8,705	2,324 (26.7%)	4,284 (49.21%)	36 (0.41%)	652 (7.49%)	2 (0.02%)	1,407 (16.16%)	1,490 (17.12%)	7,215 (82.88%)
2	9,515	570 (5.99%)	8,261 (86.82%)	38 (0.4%)	21 (0.22%)	8 (0.08%)	617 (6.48%)	557 (5.85%)	8,958 (94.15%)
3	9,897	1,071 (10.82%)	7,535 (76.13%)	17 (0.17%)	291 (2.94%)	4 (0.04%)	979 (9.89%)	1,020 (10.31%)	8,877 (89.69%)
4	9,487	5,249 (55.33%)	3,127 (32.96%)	27 (0.28%)	147 (1.55%)	1 (0.01%)	936 (9.87%)	973 (10.26%)	8,514 (89.74%)
	37,604	9,214 (24.5%)	23,207 (61.71%)	118 (0.31%)	1,111 (2.95%)	15 (0.04%)	3,939 (10.47%)	4,040 (10.74%)	33,564 (89.26%)