

CIVIL DRAWINGS FOR FONTAINE SUBDIVISION AVENUE S RIVIERA BEACH, FL.

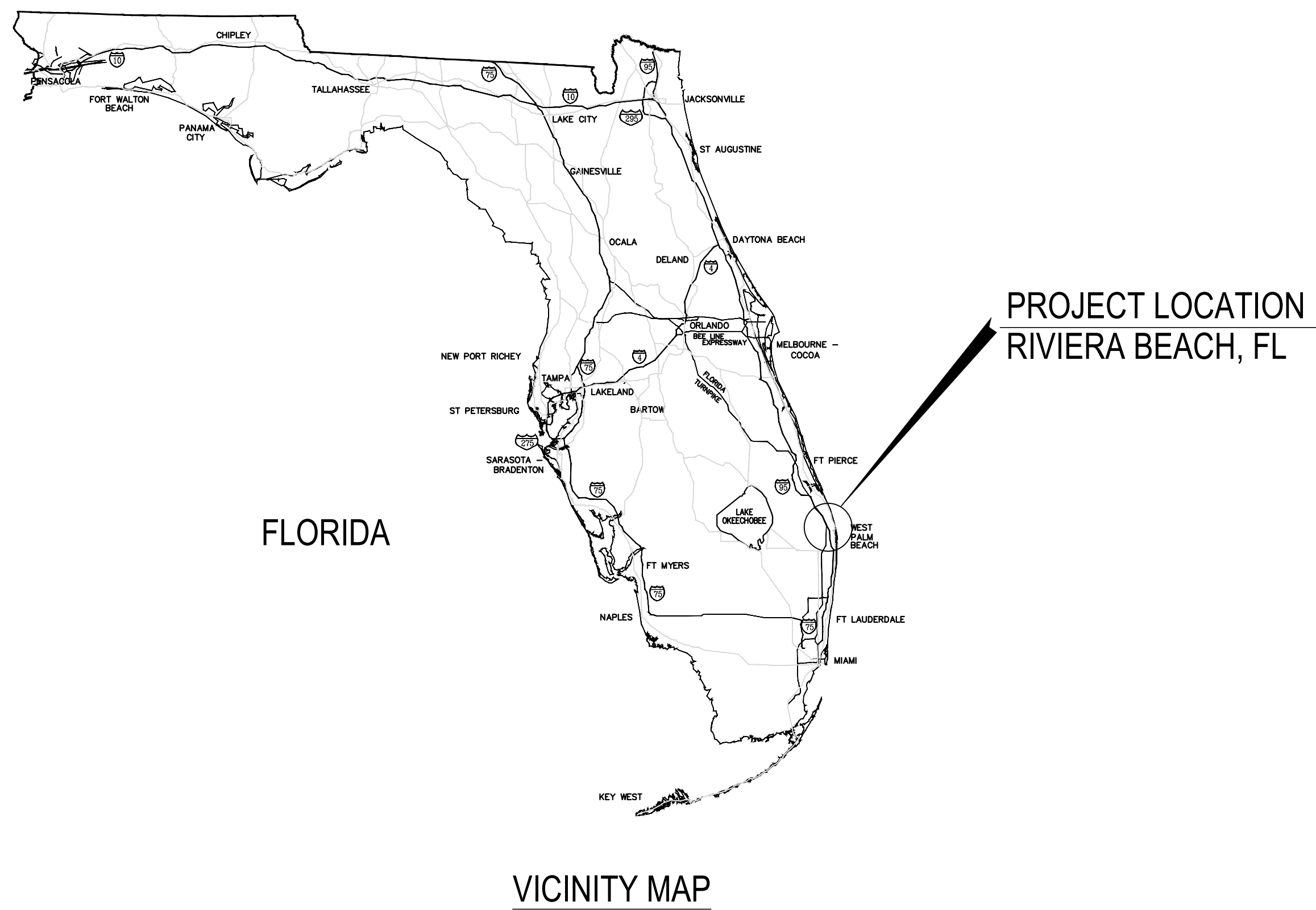
CEC
CIVIL ENGINEERING CONSULTING, INC.
CERTIFICATE OF AUTHORIZATION #33369
8155 WHITE ROCK CIRCLE
BOYNTON BEACH, FL 33436
Phone: 561-847-0398
www.cec-fl.com
andre@cec-fl.com

No:	Revisions:	Date:

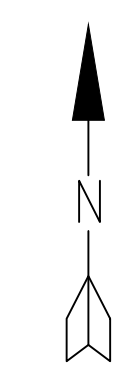
CIVIL DRAWINGS FOR:
FONTAINE SUBDIVISION
AVENUE S
RIVIERA BEACH, FL

Project #:	21-023
Issue Date:	05/17/21
Drawn By:	MAW
Chkd By:	AMW
Scale:	As Shown

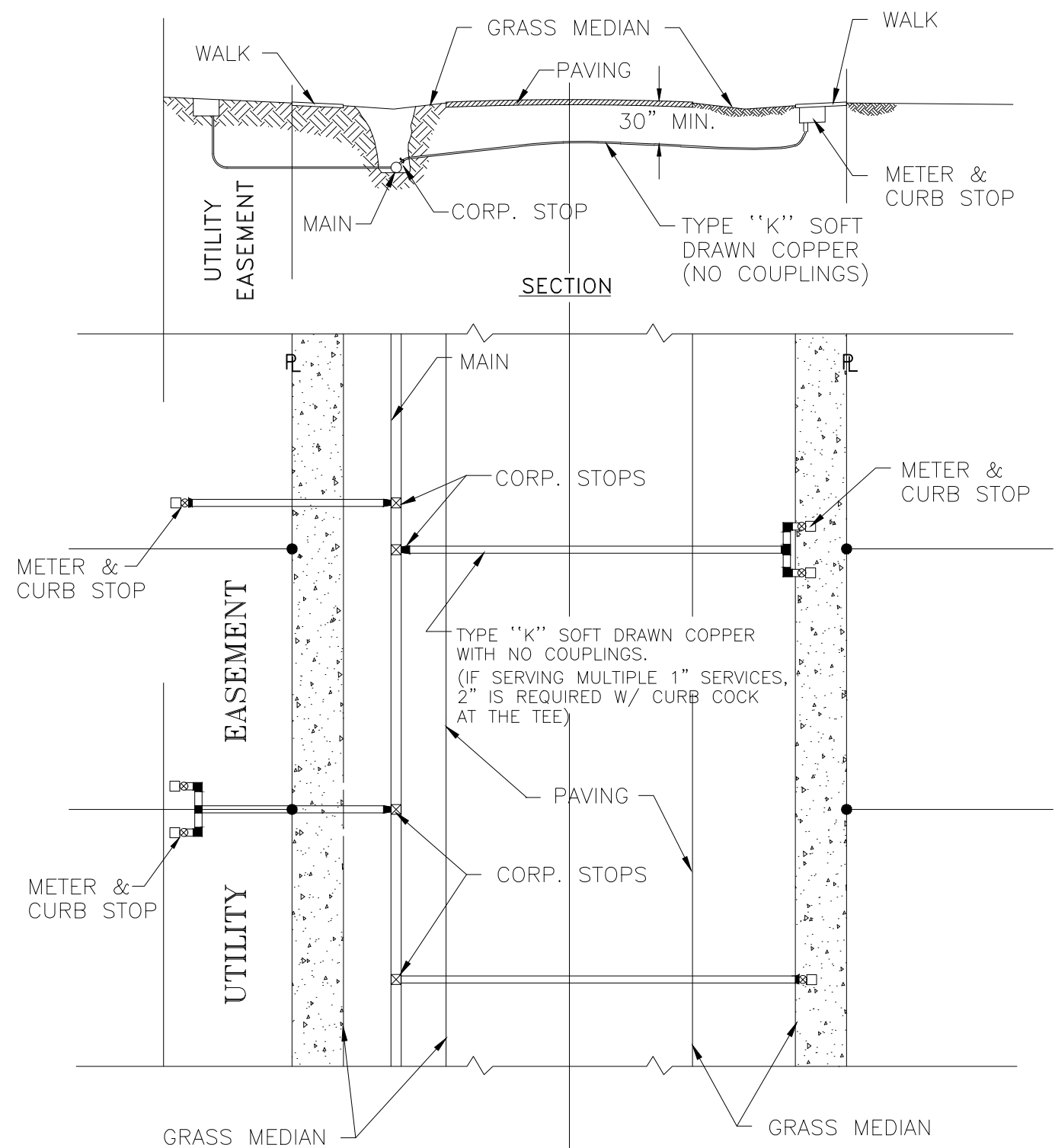
Andre M. Webster, P.E.
Florida PE # 87358
SHEET TITLE
COVER SHEET
SHEET NUMBER:
C-1



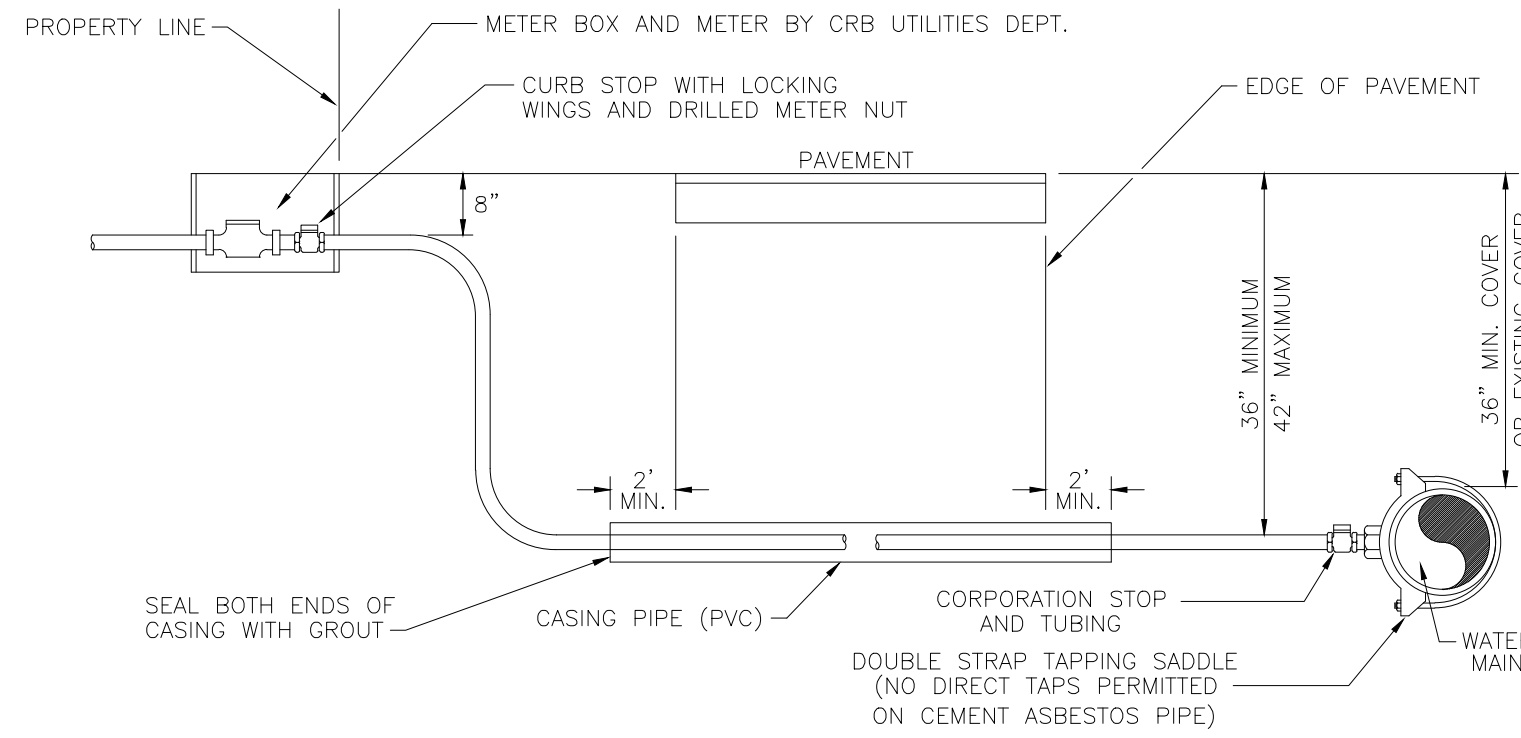
- SHEET INDEX:**
- C-1 COVER SHEET
 - C-2 WATER/SEWER PLAN
 - C-3 CITY OF RIVIERA BEACH WATER/SEWER DETAILS
 - C-4 DRAINAGE & GRADING PLAN



NOTE: ALL ELEVATIONS
SHOWN IN NAVD 1988

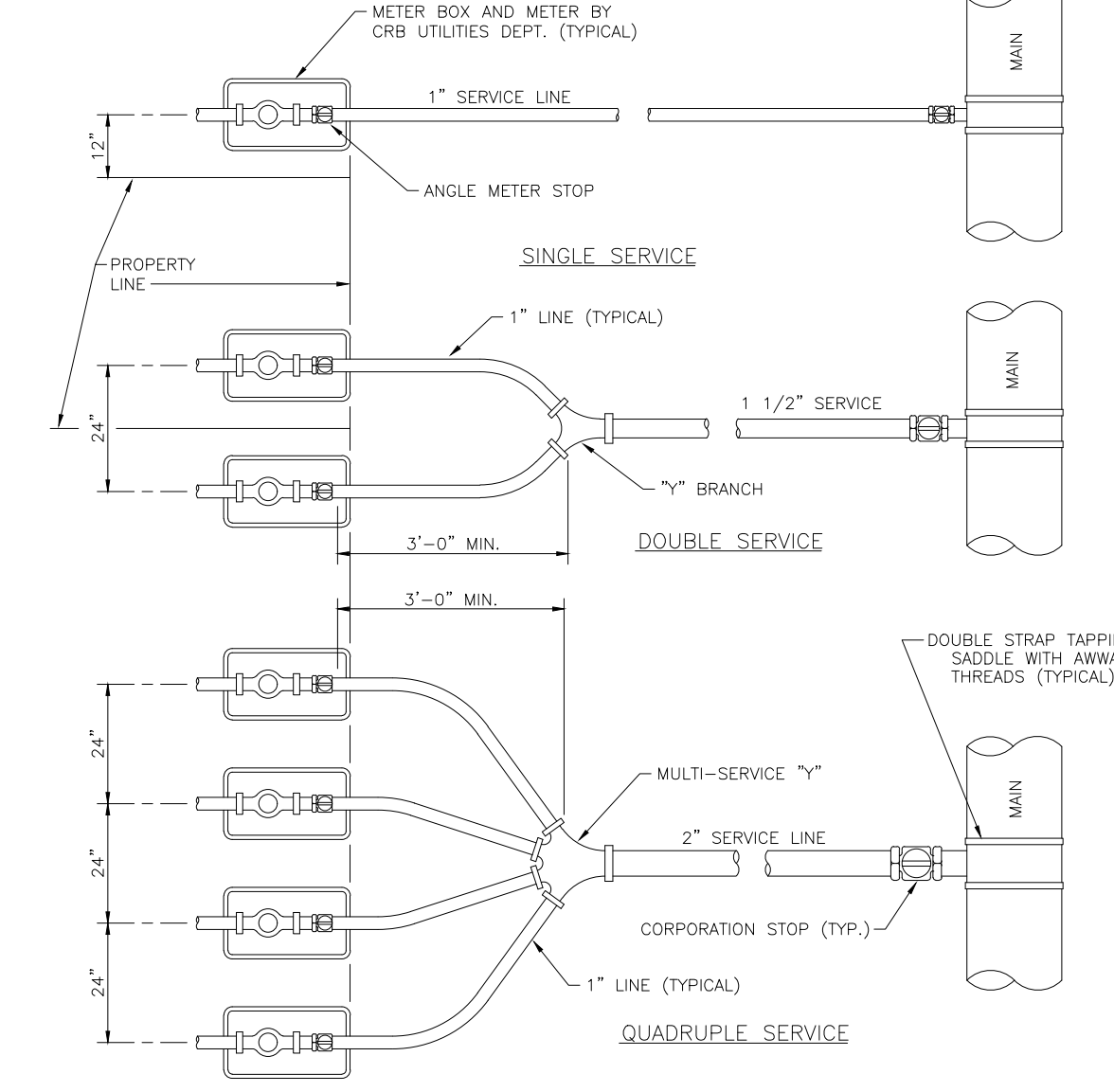


TYPICAL DOMESTIC SERVICE INSTALLATIONS
 N.T.S. 05/31/05



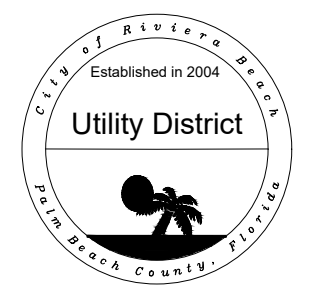
NOTES:
 1. CASINGS SHALL BE REQUIRED FOR ALL LONG SIDE SERVICES.
 2. SUCCESSIVE TAPS INTO THE WATER MAIN SHALL BE SPACED A MINIMUM OF 18" OFFSET.
 3. WHERE NO SIDEWALK EXISTS, METER BOXES SHALL BE SET TO CONFORM TO FINISH GRADE.
 4. COPPER TUBING SHALL BE TYPE "K" WITH COMPRESSION FITTINGS.
 5. USE EMS MARKER #1252 COLOR BLUE DIRECTLY OVER THE CORPORATION STOP.
 6. ALL SERVICE LINES SHALL BE EQUIPPED WITH A CORPORATION STOP AT THE MAIN AND A CURB STOP (LOCKING CONNECTION TYPE) AT THE METER.
 7. THE COPPER SERVICE LINE SHALL BE CONTINUOUS FROM CORPORATION STOP TO CURB STOP WITH NO FITTINGS IN BETWEEN.
 8. TAPPING SADDLES AND CORPORATION STOPS SHALL HAVE AWWA INLET THREADS.
 9. ALL EXPOSED FITTINGS TO BE COATED WITH COLA TAR EPOXY.
 10. GALVANIZED CASING REQUIRED FOR ANY INSTALLATION REQUIRING A JACK AND BORE, SCH. 40 PVC MAY BE USED FOR AN OPEN CUT INSTALLATION WITH THE APPROVAL OF THE CRB UTILITIES DEPT. CASING SHOULD EXTEND TWO (2) FEET BEYOND EDGE OF PAVEMENT AND SIZED AS FOLLOWS:
 A.) 1" SERVICE USE 2" CASING
 B.) 1 1/2" SERVICE USE 3" CASING
 C.) 2" SERVICE USE 4" CASING

3/4" - 2" TYPICAL WATER SERVICE INSTALLATION
 N.T.S. 05/27/05

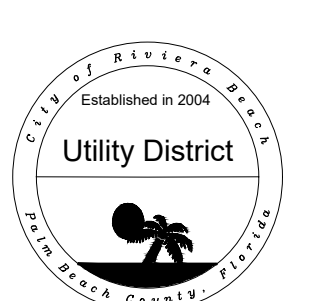


NOTES:
 1. AUTHORIZED SERVICE LINE MATERIAL:
 A) TYPE "K" COPPER TUBING WITH COMPRESSION FITTINGS.
 B) POLYETHYLENE TUBING SDR 8, COPPER TUBE SIZE.
 2. ANGLE METER STOP SHALL BE 1" MINIMUM.
 3. 1" ANGLE METER STOPS WITH 3/4" VALVES SHALL NOT BE PERMITTED.
 4. MULTIPLE SERVICE/METER INSTALLATIONS OF MORE THAN 4 METERS PER SERVICE AND SERVICE LINES LARGER THAN 2" DIAMETER SHALL BE HANDLED ON AN INDIVIDUAL BASIS.
 5. ANGLE METER STOPS 1 1/2" AND 2" IN SIZE SHALL BE PROVIDED WITH BOTH A LOCKING CAP AND METER FLANGE.
 6. NO FITTINGS BETWEEN CORP STOP AND ANGLE METER STOP ALLOWED WHEN USING POLYETHYLENE TUBING.

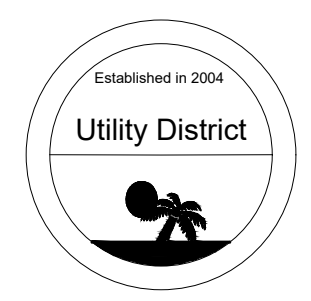
TYPICAL WATER SERVICES
 N.T.S. 05/27/05



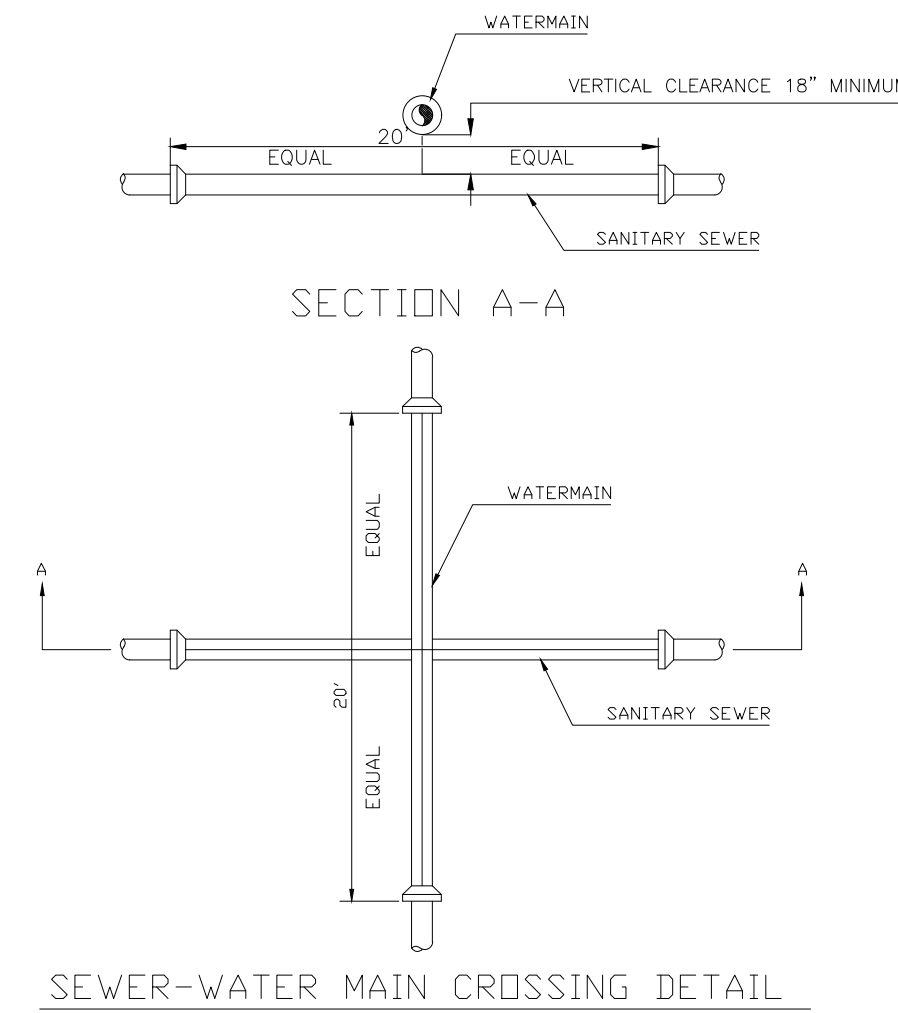
Water & Sewer Details
 City of Riviera Beach
 Utility District



Water & Sewer Details
 City of Riviera Beach
 Utility District

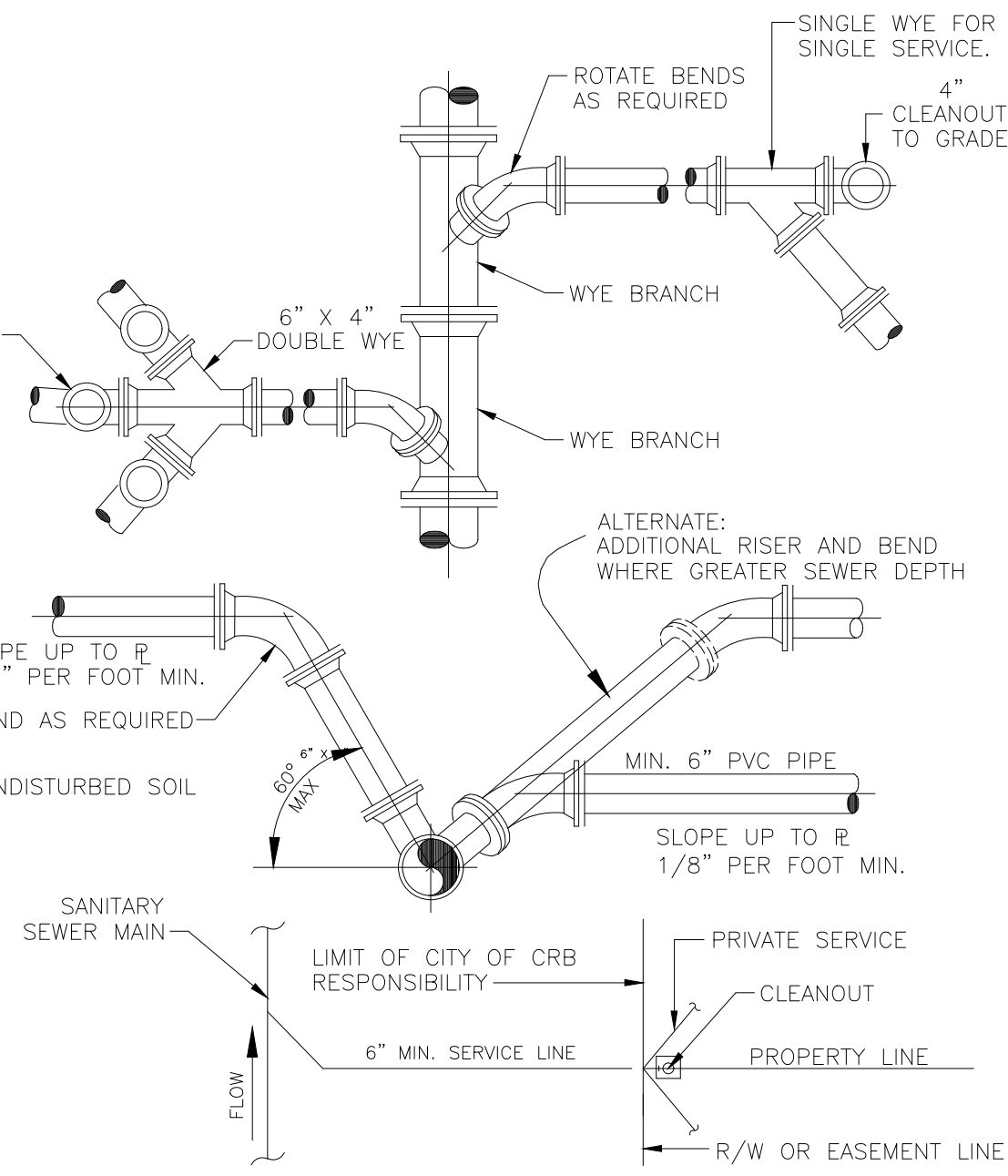


Water & Sewer Details
 City of Riviera Beach
 Utility District



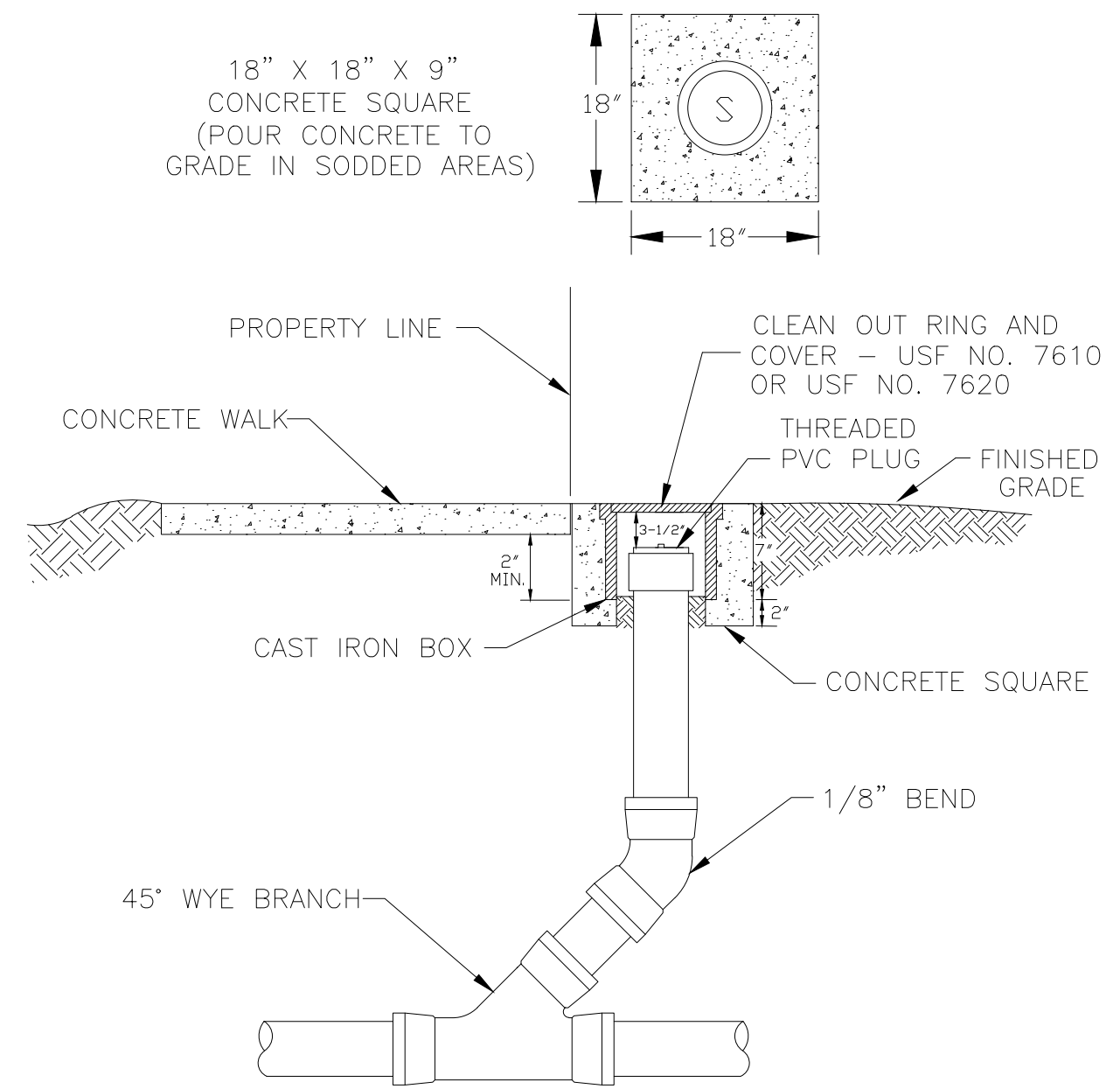
STANDARD WATER AND SEWER SEPARATION STATEMENT
 1. STORM AND SANITARY SEWER CROSSING UNDER WATER MAINS SHALL BE LAID TO PROVIDE A MINIMUM VERTICAL DISTANCE OF EIGHTEEN (18) INCHES BETWEEN THE INVERT OF THE UPPER PIPE AND THE LOWER PIPE. WHERE THIS MINIMUM SEPARATION CANNOT BE MAINTAINED, THE CROSSING SHALL BE ARRANGED SO THAT THE SEWER PIPE JOINTS AND WATER MAIN JOINTS ARE EQUIDISTANT FROM THE POINT OF CROSSING WITH NO LESS THAN TEN (10) FEET BETWEEN ANY TWO JOINTS AND BOTH PIPES SHALL BE D.I.P. WHERE THERE IS NOT ALTERNATIVE TO SEWER PIPES CROSSING OVER A WATER MAIN, THE CRITERIA FOR MINIMUM SEPARATION BETWEEN LINES AND JOINTS IN THE ABOVE, SHALL BE REQUIRED AND BOTH PIPES SHALL BE D.I.P. IRRESPECTIVE OF SEPARATION.
 2. MAINTAIN TEN (10) FEET HORIZONTAL DISTANCE BETWEEN WATER MAIN AND STORM OR SANITARY SEWER MAIN, AS A MINIMUM.
 3. FORCE MAIN CROSSING WATER MAIN SHALL BE LAID TO PROVIDE A MINIMUM VERTICAL DISTANCE OF EIGHTEEN (18) INCHES BETWEEN THE OUTSIDE OF THE FORCE MAIN AND OUTSIDE OF THE WATER MAIN WITH WATER MAIN CROSSING OVER THE FORCE MAIN.

05/27/05



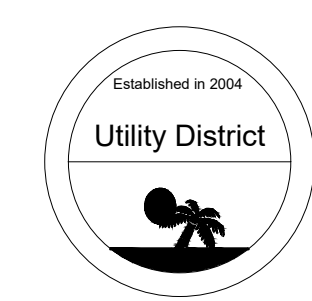
NOTES:
 1. SERVICE LATERALS SHALL TERMINATE AT PROPERTY LINE AT A DEPTH OF 3 FEET.
 2. CLEANOUT CONNECTION TO BE EXTENDED 3 FEET ABOVE GRADE PRIOR TO WATER METER INSTALLATION.
 3. CLEANOUTS ARE TO BE SET TO GRADE PRIOR TO WATER METER ACTIVATION.
 4. NO 90° BENDS SHALL BE PERMITTED FOR SEWER SERVICE AND CLEANOUT INSTALLATION.

TYPICAL LATERAL CONNECTIONS
 N.T.S. 5/27/05

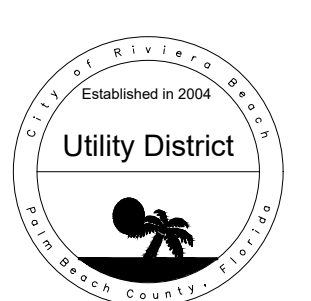


NOTES:
 1. CLEAN OUTS TO BE LOCATED IN GRASS WHENEVER POSSIBLE.
 2. CLEANOUTS SHALL NOT BE INSTALLED IN TRAFFIC LANES OR AREAS UNDER HEAVY TRAFFIC LOADS.
 3. THE COVER TO BE MARKED "S".
 4. CLEANOUTS TO BE INSTALLED PRIOR TO WATER METER RELEASE.
 5. NO 90° BENDS SHALL BE USED FOR CLEANOUT INSTALLATION.

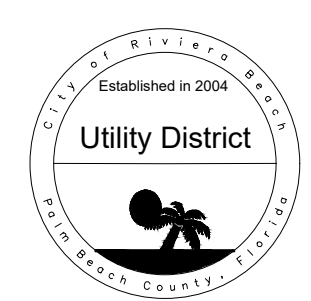
CLEAN OUT AT PROPERTY LINE
 N.T.S. 05/27/05



Water & Sewer Details
 City of Riviera Beach
 Utility District



Water & Sewer Details
 City of Riviera Beach
 Utility District



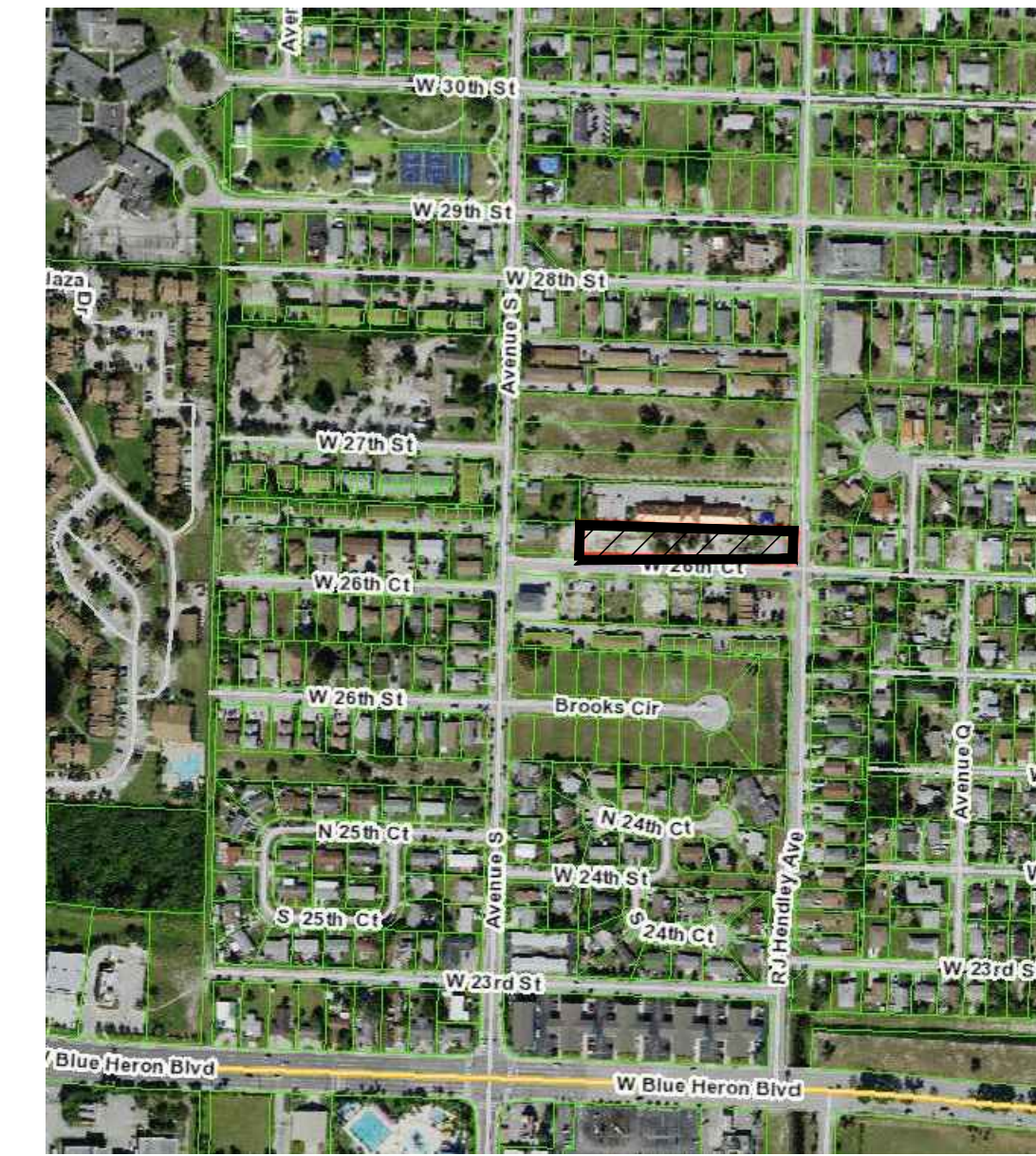
Water & Sewer Details
 City of Riviera Beach
 Utility District

No.	Revisions:	Date:

CIVIL DRAWINGS FOR:
FONTAINE SUBDIVISION
 RIVIERA BEACH, FL

Project #: 21-023
 Issue Date: 05/17/21
 Drawn By: AMW
 Chkd By: AMW
 Scale: As Shown

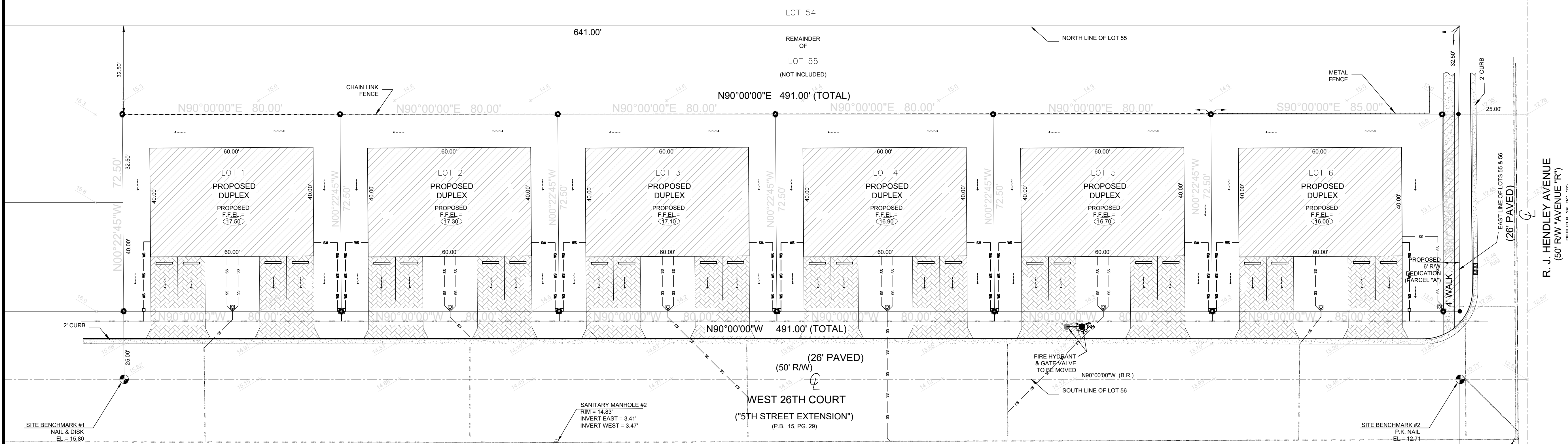
Andre M. Webster, P.E.
 Florida PE # 87358
 SHEET TITLE
WATER/SEWER DETAILS
 SHEET NUMBER:
C-3



LOCATION MAP

CEC
CIVIL ENGINEERING CONSULTING, INC.
CERTIFICATE OF AUTHORIZATION #33369
8195 WHITE ROCK CIRCLE
BOYNTON BEACH, FL 33436
Phone: 561-847-0398
www.cec-fl.com
andre@cec-fl.com

No.	Revisions:	Date:

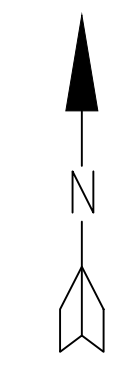
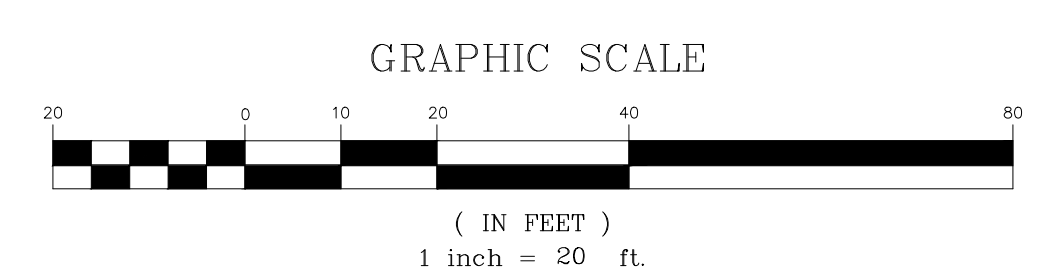


LEGEND

	EXISTING ELEVATION PER MILLER LAND SURVEYING (NAVD)
	EXISTING WATER MAIN
	EXISTING SEWER MAIN
	PROPOSED SEWER LATERAL
	OPEN CUT LOCATION

LOT 20 (P.B. 15, PG. 29)	LOT 19 (P.B. 15, PG. 29)	LOT 18 (P.B. 15, PG. 29)	LOT 17 (P.B. 15, PG. 29)	LOT 16 (P.B. 15, PG. 29)	LOT 15 (P.B. 15, PG. 29)	LOT 14 (P.B. 15, PG. 29)	LOT 13 (P.B. 15, PG. 29)	LOT 12 (P.B. 15, PG. 29)	LOT 11 (P.B. 15, PG. 29)	LOT 10 (P.B. 15, PG. 29)	LOT 9 (P.B. 15, PG. 29)	LOT 8 (P.B. 15, PG. 29)	LOT 7 (P.B. 15, PG. 29)	LOT 6 (P.B. 15, PG. 29)	LOT 5 (P.B. 15, PG. 29)	LOT 1 (P.B. 15, PG. 29)
-----------------------------	-----------------------------	-----------------------------	-----------------------------	-----------------------------	-----------------------------	-----------------------------	-----------------------------	-----------------------------	-----------------------------	-----------------------------	----------------------------	----------------------------	----------------------------	----------------------------	----------------------------	----------------------------

DRAINAGE & GRADING PLAN



NOTE: ALL ELEVATIONS SHOWN IN NAVD 1988

**CIVIL DRAWINGS FOR:
FONTAINE SUBDIVISION
AVENUE S
RIVIERA BEACH, FL**

Project #:	21-023
Issue Date:	05/17/21
Drawn By:	MAW
Chkd By:	AMW
Scale:	As Shown

Andre M. Webster, P.E.
Florida PE # 87358
SHEET TITLE
DRAINAGE & GRADING PLAN
SHEET NUMBER:
C-4